

THE WELL



**Kemsing Village Magazine
with news from Woodlands**

Winter 2012 No 188

**New future for Chart Stud
Farm—see centre pages**

CONTENTS - The Well Winter 2012 No 188

Christmas Services	3	Life on the Hill	19
Vicar's letter	4	PTA News	21
Church Services	5	A Spring Challenge	23
Library happenings	7	News from Cotmans Ash	25
CCTV	9	Kemsing School Report	26
Parish Council News	11	Family Milestones	28
News and Notes	13	Craft Group	30
St. Clere & Chart Stud Farm 15/16/17		Village Diary	31

Editorial Team:- Doreen Farrow, Janet Eaton & Rosemary Banister.

We reserve the right to edit [i.e. cut, précis, alter, correct grammar or spelling] any item published, and our decision is final.

Cover picture shows St. Mary's Church in Winter.

Cover Picture by Janet Eaton

COPY FOR NEXT ISSUE

Please submit any items or articles for the next issue of The Well before 1st February 2013 to welleditors@hotmail.co.uk

THE WELL - is published and distributed free, four times a year by the Parochial Church Councils of St Mary's Church, Kemsing and St Mary's Church, Woodlands, to encourage and stimulate the life of the community. The views expressed in the magazine do not necessarily represent official church opinion or policy.

If you use a computer to type your article, it would be extremely helpful if you could Email it to: welleditors@hotmail.co.uk or send to the Editors c/o Poppies Cottage, 3, St. Edith Road, Kemsing TN15 6PT,

For postal subscriptions, contact Debbie Pierson—01732 762033

Christmas Services at St Mary's Kemsing

**Join us over Christmas as we celebrate
the birth of Jesus together!**

Sunday 16th December

7.00 pm 9 Lessons and Carols by Candlelight

Monday 24th December (Christmas Eve)

2.00 pm Crib Service for Tiny Tots

3.45 pm Crib Service

then Carols at the Well

11.30pm Midnight Holy Communion

Tuesday 25th December (Christmas Day)

8.00am Traditional Communion

9.30 am Family Communion Service

"The Son of God appeared ... to destroy the devil's work." (1 John 3:8)

Vicar's Letter



Dear Friends

One of the strange things about being a vicar is that you're always thinking ahead. While we're all celebrating Christmas, my mind has turned to Easter. This edition of *The Well* will come out in the run-up to Christmas, but I'm writing this letter with bonfire night around the corner, and the shops are trying to make money out of us by stocking up with Halloween merchandise.

And yet this is not the grating of gears that you'd expect. The origins of Halloween are back in the medieval period, and there are different accounts of how it came about. Origins aside, the modern event is largely commercially driven. Many of the costumes and images associated with Halloween are to do with devils, demons, ghouls and suchlike.

For many people today, the Devil does not exist; he is nothing more than a figure of fun, and the dubious mannequins we see in the shops are as far as he goes. To Jesus, however, the Devil was a real person. His influence is unseen, but pervasive. He loves to make us doubt God's truthfulness and God's goodness. He loves to sow discord between fellow human beings, as they doubt each other's good intentions as well.

So much sadness in the world is directly caused by the hurt we inflict on one another. And yet the Bible is unanimous in saying that the Devil is also at work, always behind the scenes, stirring things up and poisoning what is good.

Which is where Christmas comes in. I hope many of you will join us for our carol services on 16th December (4.30pm at Woodlands, 7pm in Kemsing). As we sing of the birth of baby Jesus, 2000 years ago, we are celebrating God's plan to deal with all this pain and sadness. There we find the answer to our own selfishness, and there the Devil's undoing is sown as well.

This is why Jesus came. God did not want the world to remain a sad place, ruined by our own greed and self-centredness, all spurred on by the Devil's cunning schemes. God made the world to be good, and he wants us to enjoy it in right relationship with him. And so, in the person of Jesus, he entered the world as a baby. The rest of his plan had to unfold, but that tiny birth was the beginning of the end.

The Devil is real but not someone to fear. His days are numbered, and so is his influence; that wonderful fact is one of the many things we celebrate each Christmas.

With every blessing. Your friend and vicar,

James Oakley

St MARY the VIRGIN PARISH CHURCH, KEMSING

www.kemsingwithwoodlands.org

Vicar	Rev. James Oakley	01732 762556
Wardens	Ray Parton	01959 523045
	Jean Walker	01732 761646
Parish Office	Margaret Robarts	01732 761351
Readers	Mary Quenby	01959 522079
	Philip Walker	01732 761646
	Ruth Mason	01959 524486

The Parish Office (in the Church Hall) is open from 10am-noon on Mon. and 10.00 - 5pm on Thursdays. Answerphone at other times is 01732 761351.

Apart from 5th Sunday, the pattern of services is as follows:

- 08.00 Communion in traditional language
- 09.15 Sung Communion service (followed by coffee in the Church Hall)
- 10.30 Morning Service (with coffee in the Church Hall beforehand) Sunday Special on every Sunday apart from 1st Sunday of the month.
- 18.30 Evening Service (Evensong twice a month, a number of other formats twice a month)

The combined communion service on the fifth Sunday will usually be held in Kemsing Church because of seating and parking limitations in Woodlands.

The service pattern on this Sunday will be:

- 08.00 BCP Matins
- 09.00 Breakfast in the Church Hall
- 10.00 Combined service with Woodlands
- 18.30 Evensong

See Page 3 or Village Diary for more details about the changes to services over the Christmas period. There will also be a special service on Ash Wednesday the 13th February 2013 at 7.45pm in St.Mary's, Kemsing to which everyone is welcome.

SERVICES at St. Mary's Woodlands

1st Sunday	4.30	Evening Praise
2nd Sunday	11.30	Morning Praise
3rd Sunday	4.30	The Lord's Supper [Informal Communion]
4th Sunday	11.30	Holy Communion
5th Sunday	10.00	Combined Informal Communion Service for both Churches, usually to be held in Kemsing

Children are warmly welcomed at all of our services. Coffee is served from 11 a.m. before morning services. Evening services are followed by a light meal.

Lester Electrical Services

Your Local Electricians

Tel: 01959 52 4032 Mob: 07952 631 708

www.lesterelectricalservices.co.uk

- ✓ Lighting Sockets & Power
- ✓ Fault Finding & Repairs
- ✓ Consumer Units, Periodic Inspections & Testing
- ✓ Garden Lighting & Power
- ✓ PAT Testing & Safety Testing
- ✓ Associated trades available for complete projects and much more ...
- ✓ Helpful & friendly advice, ideas & suggestions
 - ✓ Free no obligation estimates
- ✓ Free appraisal of your electrical system

just give us a call

Ray Lester 01959 52 4032



City &
Guilds
Qualified



The Aerial Man

Family Run Business

Welcome to the Digital Age

H.D. REALITY DIGITAL

AERIAL INSTALLATION

NO CALL OUT CHARGE



KEMSING

01732 883542

A J DOE TREE SURGERY

The complete tree care service
For all tree work including stump
grinding.

Fully qualified and insured.

01622 728 574

01732 761 726

COPLESTONS

Chartered Accountant
& Registered Auditor
1, West End, Reading, RG1 2PH

Local firm serving local business. Supply
Accounts, audits, company & personal taxation,
company incorporation & general business
advice. Chartered Accountants in any of our firms are:

Tel : 01732 762 888

Fax : 01732 762 924

gardenscape

Home deliveries of
Garden and
Landscaping products

Topsoil • Compost • Manure
Bark • Mulch • Mosses
Turf • Lawn Drainage • Grass Seed
Play Area Surfacing • Raised Beds
Ballot Shapers • Pathway Materials
Decorative Stone • Aggregate

Order online at

www.gardenscapereading.co.uk

or Telephone 0800 809562

JILL RETIRES FROM THE LIBRARY



Jill Davies and her husband Mike moved to Kemsing in 1976, when their son Ian was two and a half. Prior to having children Jill worked as a secretary at BP Oil and then BP Chemicals in Green Park, London. Son Ian was followed by daughter Karen, both children went to Kemsing Primary School.

Jill returned to work in 2000 when she started at Kemsing Library helping on Saturdays and became full time in 2005. Jill has very much liked working in a village library where she has felt part of the community. Helping borrowers, particularly those new to the village has been a major part of the job and has been most rewarding. Paper work has not been such an enjoyable aspect. Modern technology has altered greatly how the library works. When Jill started at the library in 2000 they still used cardboard tickets! But now everything is computerised. Computers are now available for borrowers use and Jill has had to become computer literate in order to help people. Sadly Jill has noticed a drop in numbers of people using the library, particularly in the past year.

Jill has really enjoyed working at the library and hopes village residents will continue to support the library.

Kent County Council is asking residents to help modernise their library services—so tell them what you would like so that they can deliver services that are right for you. KCC want to work with local communities to find new and efficient ways to run local library services—do you have any ideas or comments about the library services in Kemsing? For more information about Future Library Services, go to: www.kent.gov.uk/libraries.

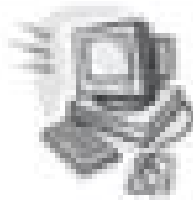
To join the conversation, please:

- **Write to:** The FLS Team, Kent Libraries, Registration and Archives, James Whatman Way, Maidstone, Kent ME14 1LQ
- **Email to:** fls@kent.gov.uk
- **Telephone:** 01622 696504

NB The loss of our Library seems to be coming closer. Please—use it or lose it. Editors.

Need help with your computer?

PC Support



Web Design

Viruses Removed
Systems Overhaul
Internet Services
Network Support

Software & Hardware
Installation / Upgrades
Troubleshooting
Repairs

Friendly Professional Advice & Support for Business & Home User
Call Andrew Ormer

01732 742 454 or 07 957 648 461

Email: enquiries@prospere.co.uk : www.prospere.co.uk

Sandalls

01959 522 464

Hair & Beauty

6, The Parade, Dynes Road,
Kemsing, Kent TN15 6RE

Late Nights
Free Consultations
Gift Vouchers Available
All Major Credit Cards Accepted
Free Parking

Retailers of : Dermalogica
OPI
St Tropez
Phyto Hair

HOT STONE
MASSAGE

dermalogica


ST. TROPEZ
The Ultimate Tan

The Many Faces of Love, Loss and Happiness

- Individual & Couple Relationship Counselling
 - Marriage Guidance Counselling
 - & Specialist Bereavement Therapist
- Specialises in working with individuals and professionals
who are ready to be empowered and make positive
life changes in Sevenoaks*

Helen Mia Harris BA, PGdip, BACP Reg
01732 453758 or 07882 369663
www.psychotherapysevenoaks.com

CHAPMAN'S CHIMNEY SWEEP

SEVENOAKS

VACUUM AND BRUSH

PROMPT CLEAN SERVICE

ALL AREAS

01782 325 370

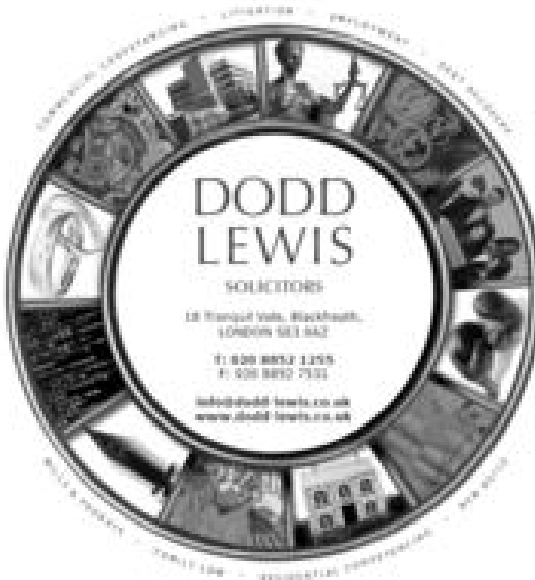
Kemsing Parish Council's view on CCTV

Compared with other villages, Kemsing's crime rate is relatively low, nevertheless it is a genuine issue that causes concern to residents and the Parish Council does take this very seriously. CCTV has been discussed and considered by the Parish Council on a regular basis since 2005 and it was hoped for some time that Kemsing would be able to benefit from the CCTV system in place at Sevenoaks District Council (SDC), monitored and paid for by SDC, but due to lack of capacity and fibre-optic cable, Kemsing is not able to join this scheme.

The most recent CCTV review was conducted in November 2011 following vandalism attacks at the play areas. The Parish Council was advised that in order for a CCTV system to be an effective deterrent the video should be of a high enough quality to be used as evidence in a court of law, which requires the use of the proper lighting and sophisticated equipment. Due to the remote locations of both play areas in Kemsing solar powered CCTV was considered, but ruled out as it would not provide sufficient power. The overall costs per site for suitable equipment, storage cabinets for the equipment, cabling, lighting, installation, signage and on-going maintenance have proven to be prohibitive at this time, compared with the amount spent on insurance and repairs and the actual amount of vandalism. The Parish Council will continue to review the matter and residents are invited to send in their views. Please email or write to the Parish Council Clerk.

THE SEVENOAKS ARCHERY CLUB
Invite applications from experienced Archers and beginners. Coaching arranged.
Enquiries to: Mike Davies
(Membership Secretary)
48 Childsbridge Lane, Kemsing
Sevenoaks, Kent TN15 6QR
01732 763266
email: membership@sevenoaks-archery.co.uk
www.sevenoaks-archery.co.uk

R. & I. Autos Ltd
Vestry Trading Estate
Oxford Road, Sevenoaks
M.O.T. Testing
Repairs & Servicing
M.O.T.s at our
Special Discount Price
01732 450 610



DODD LEWIS
SOLICITORS
18 Finport Way, Blackheath,
LONDON SE3 8AZ
T: 020 8852 1255
F: 020 8852 7321
info@dodd-lewis.co.uk
www.dodd-lewis.co.uk

Wherever life takes you...

Established in 1992, our longstanding reputation for excellence and our friendly manner ensure that you get the very best legal service.
Our specialisms are:-

- Commercial Property
- New Build Developments
- Residential Conveyancing
- Family & Matrimonial Law
- Wills & Probate
- Contested Wills & Probate
- Commercial & Domestic Company Remedies
- Employment Law
- Debt Recovery

Our clients come first, our priority is to minimise delays and to provide a stress free environment from the outset. With business and personal clients both locally and worldwide, we understand how best to protect your interests.

...we're here to help



Ightham Mote Open for Business! Winter 2012/13

Its almost time for our winter opening, with the house decorated for Christmas, carol events in our courtyard and plenty of seasonal gifts available in the shop.

From 8th November to 23rd December, 11.00am – 3.00pm, Thursday through to Sunday we will be open for our Victorian & American 1950s style Christmas. There are Christmas trees/decorations and at weekend, activities for the children.

There is limited access in the house and garden. Do come and have a look, shop for your Christmas presents and have refreshments in the restaurant.

In November we also started a series of lecture lunches with a very interesting and varied programme (see below) as well as many other winter events.

Dates for your winter diary:

7 dates between **Nov.—23rd Dec.** Childrens Christmas Crafts free workshop but normal admission charges apply.

Thursday 6th December - ‘All you can eat Pudding Evening’ £19.75pp.

Friday 14th & 21st & Saturday 15th & 22nd December – Carols with a choir in the medieval courtyard followed by 2 course dinner £29.50pp.

4 dates between **26th Dec.—1st Jan.** Full English Breakfast followed by a guided walk across the estate £19.50 booking essential.

5 dates from **3rd Feb-3rd March 2013.** Roast & Ramble, mid day walk around estate followed by a 2 course lunch £19.50. Booking essential.

2nd & 9th Feb. ‘Munch & Learn’ A visitors companion to Tudor England 11am £22.50pp.

Sundays 3rd, 10th, 17th, 24th February ‘Roast & Ramble’ £19.50pp

Thursday 7th February ‘All you can eat Pudding Evening’ £19.75pp

Thursday 14th February ‘Valentines dinner’ 35.00pp

Thursday 21st February. Childrens Cup Cake workshop. £5.50 10.0am-2.0pm

Bookings for above 01732 811314

Saturday 9th February. The Making Of Spielbergs’ War Horse. A talk by A. Robertshaw 11.00am, followed by 2 course lunch £22.50pp

Saturday 9th February. ‘The Magpie’ a one woman play with Kate Glassock 5.00pm, followed by 2 course supper. £22.50pp

Saturday 16th February. Talk by Dame F. Reynolds ‘The Changing Face of the N.T.’ 11.00am.£22.50

Wednesday 20th February Wild Child—Make a Bird Feeder— 11.00am & 2.00pm. £4pp

Saturday 23rd February. Talk by Guy Portelli ‘From School Rebel to Dragon Slayer’ 11.00am, £22.50

Bookings for the above 01732 810378 ext 100

For more information see; www.nationaltrust.org.uk/ighthammote or call as above.

REPORT FROM KEMSING PARISH COUNCIL

Whilst writing this report in October, it is incredible to think that we are quickly approaching the end of 2012, which proved to be a remarkable year with the Queen's Diamond Jubilee and the Olympic Games. The past year in local government has been just as interesting. Although the Localism Act 2011 received Royal Assent on 15 November 2011, different parts of the Act came into force at different times, some only as recent as September 2012. The Act is aimed to increase powers of, and give greater recognition to the first tier of local government, in terms of new freedoms, new rights as well as more involvement in the planning process. Through the Act the Standards Board was abolished and each local authority had to draw up and adopt their own Members' Code of Conduct.

Moving on to village affairs, I am delighted to inform residents that Police Community Support Officer **Sue Harwood** was re-appointed as Kemsing's PCSO on 17 October 2012. The Recreation Grounds Committee continues to investigate possibilities to resolve the issue with footballs being kicked against the youth shelter at the Common Field Recreation Ground. Various site meetings were held, quotations obtained and a number of suggestions are being considered.

As always, I would like to extend a personal thank you to the Parish Councillors for all their hard work and for giving their time so generously in striving to improve the quality of life in our community. They are : Chairman Mrs. Marie Cole, Vice-Chairman Mr. Godfrey Croughton, Mr. Douglas Bennett, Mr. Brian Buttifant, Mr. Bob Dawes, Mrs. Sally Dickinson, Mr. Paul Eaton, Mr. John Jermain, Mr. Richard Lang, Mrs. Margaret Robarts, Mrs. Wanda Ross, Dr. Philip Walker and Mrs. Rosemary Wedderburn. Thank you also to the Co-opted Members on the Downland Management Committee (Mrs. Caroline Copleston, Ms. Anne Barratt and Mrs. Norma Munson). Also, our sincere appreciation for all the work that they do, to Mr. Bob Banister who is Warden for Green Hill, Mr. John Farrow and Mr. Fred Lomas who are always working hard to keep Kemsing litter free. Also to our District Councillors Miss Lorraine Stack and Mr. Mark Butler for their interest and support to the Parish Council on issues affecting Kemsing.

Just a reminder to residents that all Parish Council meetings are open to the public and are usually held in the Small Hall, St. Edith Hall and commence at 8 p.m. Everyone is welcome to come along to a meeting if you are interested in the activities of the Parish Council. Alternatively the minutes and agenda can be viewed on the Parish Council's website, on the notice board at St. Edith Hall, or at Kemsing Library.

Parish Council meetings : 16 January 2013, 20 February 2013, 20 March 2013

Annual Parish Meeting : 27 March 2013

You can contact the Parish Council at The Clerk's Office, St. Edith Hall, High Street, Kemsing, (tel.01732 762841). Normal office hours are Monday to Friday between 9.00am—1pm. Email to: kemsingpc@tiscali.co.uk and website: www.kemsingpc.kentparishes.gov.uk

On behalf of the Council, I would like to wish everyone a Happy Christmas & Peaceful 2013.

Yolanda Tredoux, Parish Clerk



EKW LEGACY PLANNING
Local Will Writing Service
IS YOUR WILL UP TO DATE?



A NEW WILL CAN SAVE INHERITANCE TAX AND PROTECT YOUR HOME AND SAVINGS IF YOU GO INTO LONG TERM CARE

For a free Will review and help with all types of Wills, Trusts, Probate and Lasting Powers of Attorney

Call our local specialist Tony Mann on 01732 389294 for a FREE consultation
tony@ekwlegacyplanning.co.uk www.ekwlegacyplanning.co.uk

KEMSING WATER SOFTENERS Consider the benefits:

- Saves heating bills - No heat loss on top of showerheads
- Longer lasting taps - Soap & detergent more effective by 50%
- Prevents limescale on dishes, taps & kettles - Reduces water to clean
- No restriction for the mortgage market - No electric meters

"Harveys" block salt, tablets or granules delivered or collected

For more information telephone
 01732 766 471
www.kemsingsofteners.co.uk



Kemsing Sports Pavilion

Charity No. 294120

www.kemsingpavilion.org.uk

Planning a children's party?

Well - we can help!
 We have a lovely, large room
 With self-contained kitchen
 and toilets.

Suitable for children's parties
 up to age nine.

Want to keep fit?

Have you tried playing squash?

We have a squash court available for hire at £6.00

For a 45 minute session.

Showers & changing rooms available. To find out more & to book a court, ring us.

So call us now on : 01732 762 865
Sir Mark Collet Pavilion, Heaverham Road, Kemsing

NEWS and NOTES

Travelling crib. The travelling crib containing Mary and Joseph starts on its journey round the village after the Family Service on 2nd December. If you would like to host the Crib for one night before it returns to Church on Christmas Eve, please sign your name on the list at the back of the Church.

Kemsing Heritage Centre. With the forthcoming 100th anniversary of the outbreak of the First World War, the Heritage Centre are considering organising an outing to visit some of the graves of the Kemsing war dead, followed by the 8pm memorial at the Menin Gate in Ypres. The outing would probably take place in June 2014. Costs and details still to be arranged, but if anyone is interested in putting their names down to receive information about the trip, please email janeteaton@tiscali.co.uk. There are also plans to re-print Janet Eaton's book 'Lest we Forget' about all of Kemsing's 41 dead from both world wars.

Beware!! The mower thieves are round again. Several lawn mowers have recently been taken from gardens in the village where they have been under lock and key and bolts. Nothing seems to deter the thieves, so please either move your mower to a more secure location where possible or invest in a shed alarm. Never leave mowers where they are in any way visible—you may think they are safe—they are not!

Familiar Faces In the last edition of *The Well*, see page 30, there was a photograph of the Choir and we asked how many could be named. Bert Skinner has supplied us with a list of those he can remember, and he is pretty sure the outing was to The Hague around 1980, and the picture was taken in the grounds of the English Church there. The following have been named: Alf Haynes (Verger), Claire Edmunds, Jackie Paris, Barbara Skinner, Chris Long, himself, Peter Farr, Robin Edmunds, Robert Farr, Ray Parton, Reg Leedham, Ken Daniels (Vicar), Johnny Dockree, Michael Parton, Paul Edmunds, and Chris Stone. Some of the above are sadly no longer with us, but Robin and Ray are still members of the Choir!

The Kemsing Singers invite you to "A Kemsing Christmas" on **Friday 14th and Saturday 15th December** at St Edith Hall, Kemsing at 7.30pm. Featuring Tenor Edward Bonner in the Christmas Cantata "The New Born King", Christmas songs old and new with a few for a sing-along with you. Directed by Sara Kemsley with Peter Young on piano. Tickets £8, Seniors £6, children £4 from 9, Cleves Rd., Kemsing TN15 6RX Tel 01959 523752 or via "Ticket office" at www.kemsingsingers.com

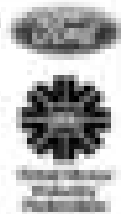
Cancer Research UK (CRUK). Joyce Course writes on behalf of the local CRUK committee that to date you have helped raise £15,050 towards scientific and clinical research by the only organisation fighting all 200 types of Cancer. Over £25 million is spent by CRUK leading scientific and clinical research in SE England. Thank you and please watch out for future local events to help us raise even more funds.



Oldbury Motors Specialising in
SERVICE & REPAIRS TO ALL MAKES

Latest Diagnostic equipment used. Air Conditioning
 Budget to performance tyres at discount prices
 Over 30 years experience

We offer super customer care. Our reputation speaks for it
 Quality working at competitive prices. All credit cards accepted
www.oldburymotors.co.uk



01732 763 720

Unit 7, Clarendon Business Park, Waverley Lane, Kenning, Surrey GU24 0PL

Your Local Roofer

Specialists in flat-roofing works, gutter Fascias, Gutters, Tiling / Slate works,
 Chimney Flashings / Repointing, High Performance Glassware, Felt & DRYFIX,
 Fibreglass System up to 25 years Guarantee



(01732) 370426

aquaguard

Email: dave@aquaguard.co.uk
www.aquaguard.co.uk

We accept



FALVEY BROTHERS LTD.

BUILDING CONTRACTORS

LEWIS ROAD, ORFINGTON, KENT, SE8 4AL

Tel: 01689 821550



Specialising in

- EXTENSIONS
- RENOVATIONS
- ALTERATIONS
- MAINTENANCE & REPAIR
- DECORATING

www.falveybrothers.co.uk

Please support our advertisers and mention this publication

CHART STUD FARM & ST CLERE ESTATES

The village has come to the end of an era and the beginning of another, with the sale of Chart Stud Farm to St Clere Estates. The two are, though, historically entwined and, in some ways, have come full circle.

Mac Roxborough, who worked for Ian Pattullo and Jenny Donegan, tells the story as follows: ‘Ian Pattullo, Jenny Donegan’s father, came to Heaverham and rented two farms - Heaverham and Drane from St Clere Estates. He put in an Ayrshire herd with a modern milking parlour and built from there. Along came the War, and he took over St Edith’s Farm from a Mr. Hamlyne and put in another dairy herd.

“In the early 1950s, my brother Bill and I took over the management. He did the livestock and I did the grass and arable. We now had 250-300 head of cattle and a flock of sheep. Fat cattle came more into the equation, as these could be sold in his own market (Pattullo & Vinson) in Sevenoaks. The cows dwindled a bit as the fat cattle increased.

“All went on until the 1970s, when everything changed. Mr. Pattullo was worried about his health and decided to cut right down, plus the fact that St Clere wanted their farms back. All the cattle went, and Bill went with them to Shoreham. I was left with a few fat steers and the sheep.

“Chart Stud Farm was bought from Douglas Boyd in 1958. He sold it to Desmond Donegan, who married Jenny in 1971. He was an Irish dentist who was a keen horseman. He built a house (Chart Stud Farm House) and took over the Stables, and then built an indoor Riding School. In 1975 Jenny’s father died suddenly and we came to the end of an era. St Clere took back the rest of Heaverham Farm.

“That left St Edith Farm and a few acres. Des and Jenny quickly decided that they would take over the farm and stock, so I went to work for them. Des became a very keen farmer but kept his dental practice going as well. They built up the flock to 750 ewes, and lambing was a chaotic time for us!

“Twenty odd years went by, then out of the blue Des had a fatal heart attack - he had just retired. By this time, I also had retired. Jenny bravely decided to carry on, and did very well. She reduced the number of ewes but still had a worthwhile flock. Then, in 2011, Jenny had a heart attack and died. It was really the end this time. First, all the cattle were sold, then the sheep. Only the green grass remained.”

The Well is printed by Highland Printers, Unit 1, Church Farm, Church Street,
Seal, Kent TN15 0AT, tel. 01732 762131, fax.01732 763501
Email: highlandprinters@aol.com



The way it was. .



In September 2012, Chart Stud Farm and the farmland w

Eliza Ecclestone, who manages th

We were very pleased that we were able to be the successful bidders for Chart Stud Farm. I Kemsing and Heaverham, and wanted it to be well looked after into the future, as it has been firm plans for the future of the buildings, but I can reassure everybody that the land will re

future. At this stage, it is most likely th

Eliza g

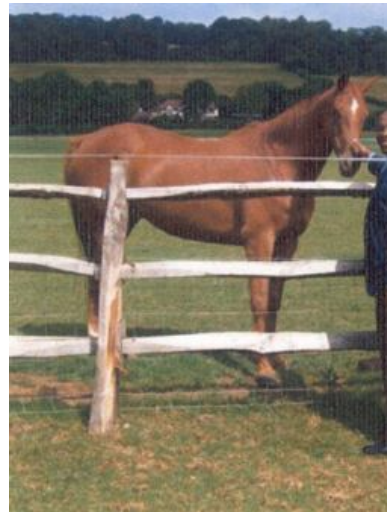
“If anybody had put in unsuccessful bi
would be interested in buying

The telephone number of S



Sheep along the Heaverham Road in March 2012

With thanks to Erica Cole and Kemsing Heritage Centre Association for the photographs.



ST CLERE ESTATE—THEN AND NOW



Farming at
St Clere in
the 1930s



ere put up for auction and were bought by St Clere Estates.

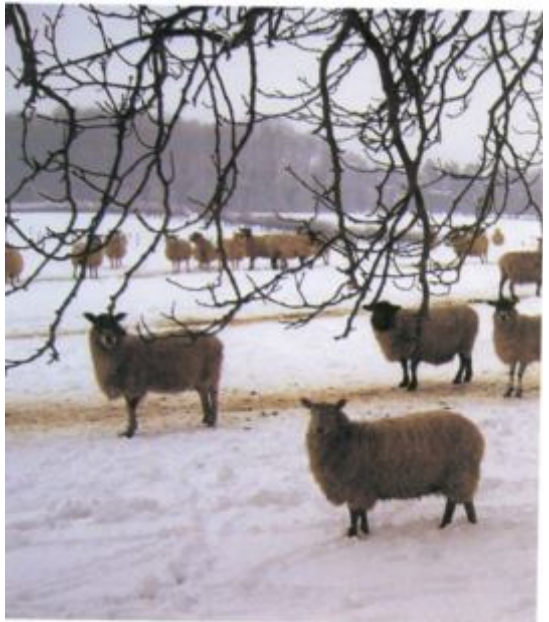
ne estate and lives in St Clere says:

Like everybody in Kemsing, I was very anxious about the future of the beautiful land between
in the past. As we were not at all sure that our bid would be accepted, we have not yet made
remain in agricultural use for the foreseeable
at most of the land will be ploughed for crops.

oes on to say:

ds for land adjoining their properties and still
g it, please feel free to contact me.”

t Clere Estates is: 01732 762588.



(Left)
Jenny
Donegan
and
friends at
Chart
Stud
Farm.

How we are going to miss them!



Now in Kemsing....

Local care for your pet!

<http://www.elandsvet.co.uk>
www.kemsing.co.uk

Main Surgery: 01732 752833
 Kemsing Branch: 01732 752850

Our Kemsing branch combines high quality care with genuine compassion - your pets are treated as if they were part of our own family - all with the backing of world leading minimally invasive surgery at our main clinic in Duntun Green.
 Open: 08.00 - 18.00 Mon-Fri
 Except Thursday 08.00 - 11.00

1 High Street, Kemsing, Sevenoaks, Kent. TN11 5JH
 01732 752850

Mr P. J. (Gemma) D. J. (Hazel) C. B. (Liz) C. B. (Liz) C. B. (Liz) C. B. (Liz)
 12 St John's Church, London Road, Duntun Green, Sevenoaks, Kent. TN11 5JH



01959 525558

OPENING HOURS

• MONDAY - FRIDAY •
 10.00 - TILL LATE

• SATURDAY •
 9.00 - 4.00



• STATION HOUSE • STATION APPROACH •
 • OTFORD • TN14 5QY •

OPENING TIMES WILL CHANGE IN THE NEW YEAR

**DRAINAGE
 PROBLEMS?
 CALL FOR HUNTS**
**COMMERCIAL AND DOMESTIC
 DRAIN CARE AND REPAIR**

CCTV SURVEYS • PRE-PURCHASE SURVEYS
 DRAIN REPAIRS AND INSTALLATIONS
 HIGH PRESSURE WATER JETTING
 INSURANCE CLAIM CONSULTANCY
 PIPE LINING

01732 763994
www.call4hunts.co.uk

LIFE ON THE HILL

East Hill - Knatts Valley - Tinkerpot Lane - Romney Street



Does anyone out there remember the wonderful Summer fetes we used to have at Woodlands? The stalls, silly games and friendly rivalry between The Fox & Hounds and the Rising Sun at the ‘Tug of War’?

Sally and David Hodges have very kindly offered the use of their field for a Woodlands Summer Fete on **6th July 2013**; proceeds in aid of St Mary’s Woodlands. The extent to which it becomes a community event will depend on how much interest there is in the community. Give Sally (01959 523461) or Anne (01959 522986) a call if you would like to be involved. In any case, put the date in your diary and come along! We at St Mary’s Woodlands do hope that you will join us for our Christmas services – details below:-

Christmas at Woodlands

<i>Sun 16th</i>	<i>4.30 Service of Lessons & Carols</i> <i>followed by seasonal refreshments</i>
<i>Sun 23rd</i>	<i>11.30 Holy Communion</i>
<i>Mon 24th</i>	<i>5.30 Carols by Candlelight</i> <i>Christmas Tea Party follows</i>
<i>Tues 25th</i>	<i>11.00 CHRISTMAS DAY FAMILY</i> <i>COMMUNION</i>

**DO YOU OWN A
RENAULT?**

Ren7oaks

***Service, Repairs
& MOT's***

*Unit G2, Chaucer Business
Park, Kemsing, TN15 6HU*

www.ren7oaks.co.uk

01732 761200

The Good Garage Scheme Member

EMMA PEACOCK BSc MChs SRCh
STATE REGISTERED CHIROPODIST / PODIATRIST
at South Park Medical Services, South Park, Sevenoaks,
TN13 1ED

A State registered Chiropodist specialising in
providing a comprehensive foot health care service,
including the treatment of corns, calluses, verrucae,
ingrown toe nails & nail surgery.

Morning, afternoon & evening appointments - Home visits

For an appointment ring **Sevenoaks 01732 742529**
(Parking facilities)

Acorn Osteopaths

Seal and Sevenoaks

General Osteopathic Council Registered
Louise Evans B.Ost; Patrick Norman B.Ost
Morn. & Evening Appts + Home Visits
For advice & appointments in Seal

Louise **07780 548143**

Patrick **07786 400260**

For appointments in Sevenoaks
Telephone **01732 450049**

THE BELL



Enquiries: John O'Sullivan
High Street, Kemsing
Tel: 01732 761 550

Good home cooked food
from 12 noon all day

Private Room available for Functions/Parties

Euromotors
FULL CAR SERVICING & REPAIRS



Diagnostic fault finding - Air conditioning service and repairs
Bodywork - MOTs - Collection & delivery available
& Courtesy car by arrangement.

Telephone: **01732 763444** www.euromotors.org.uk

At Chaucer Business Park, White Lane, Kemsing, Sevenoaks, TN15 6PN

PTA NEWS

Thank you to everyone in the village for their support of our recent fundraising events.

On Sunday 16th September we took part in a Dragon Boat Race at Bewl Water and raised in the region of £2,500. Everyone who took part in the race or who came to watch had a really fun day and we have decided that we would love to do it again next year. Thank You to everyone who sponsored our brave rowers!

We have also had our most successful Boot Fair on Sunday 30th September.

This school year we are aiming to raise money for the refurbishment of the ICT suite and to bring our whole computer system up to date. The PTA have a packed calendar of fun events planned for the school. At the following events we would love to see families and friends of the village. So come and join in!

Saturday 1st December Christmas Fayre 2pm-4.30pm

Come and enjoy an afternoon of festive fun at the school. We have a large range of stalls including Father Christmas, Christmas Raffle (first prize is a fantastic hamper) and a mini Silent Auction, as well as external stalls to help you with your Christmas shopping. We will also have the Kemsing Community Choir entertaining us!

23rd March 2013 Easter Egg Bingo. More details to follow.

Thursday 23rd May Happy's Circus

The school is hosting a one-off circus just for Kemsing School ! Tickets available from the Christmas Fayre onwards.

Saturday 29th June Kemsing Village Fete

For further details please go to www.kemsing.kent.sch.uk

CSK (formerly Connexions) Job Club. Regrettably there has been a significant cut in Kent County Council's budget for youth services and the decision was made to withdraw funding for a number of Job Clubs in the area including Kemsing. The new service offered to young people by CSK is available at:-

- Sevenoaks Library on Monday mornings from 9.30 to 10.30am
- House in the Basement Youth Café (Stage Theatre) Mondays 11am to 6pm
- West Kent Housing Tuesdays 1.00 to 5.00pm

Young people can also contact Dartford Connexions on 01322 281214 for further help.

The Village Framer

Quality at an
affordable price

Artwork
Needlework
Pictures & Posters

www.villageframer.co.uk

graham@villageframer.co.uk
07858 126427



SHEFFORDS
PLASTERERS & BUILDERS
EST. 1887

- Building Services
- RICS Home Survey Reports
- Wallpapers
- Development Consultancy
- Property Refurbishment Consultants
- Best Review Advice
- Party Wall Matters

11, London Rd, Sevenoaks, TN13 1AF

Email : Tasks@sheffords.co.uk
www.sheffords.co.uk

01732 450860



Kamsing Motor COMPANY

- MOT Tests (Cars & Diesels)
- Servicing & Repairs to all makes of car
- Full Diagnostics
- Air Conditioning Servicing
- Servicing & Repairs to motor cycles
- Parts & Labour Guarantee
- Free Collection & Delivery within 10 mile radius
- Courtesy Car available by arrangement
- Friendly & Helpful Staff
- Member of RMP Quality Control Programme

7, West End, Kamsing, Sevenoaks, Kent.

Tel: 01732 741 873

Fax: 01732 741 816

www.kamsingmotors.co.uk



Master Partner



A SPRING CHALLENGE

St. Mary's Church in Kemsing is holding their challenge walk in the North Downs again next spring. This is the sixteenth event and continues to attract walkers from as far afield as Yorkshire in the north and Hampshire in the south west. Many people return year after year as they look forward to seeing our wonderful countryside and to take part in an event that is as challenging as they want it to be and to enjoy the relaxed atmosphere and hospitality. (Their words not mine) In fact it has proved so popular that in the past few years the entry list has had to be closed early as it becomes oversubscribed, exceeding our maximum number of 250 walkers.



This event should not be confused with a sponsored walk or race, it is neither. Walkers may choose one of three routes, each approximately 11, 15 or 20 miles long that has to be covered within a set time following a route description over cross-country footpaths and lanes, starting and finishing at St Mary's Church in Kemsing. The eleven mile route goes into the Darent Valley, Romney Street and Woodlands, the fifteen mile route goes into the Darent Valley, Shoreham, Austin Lodge Valley, Romney Street, Knatts Valley and Woodlands and the twenty mile route is similar but extends to Lullingstone. The entry fee of £12 for adults and £5 for under 18s provides for tea and biscuits at the start, light refreshments at the checkpoints and a sandwich and cake tea at the finish with a timed certificate. Event badges are also available for purchase. The profits from the event help to subsidise major projects at St Mary's Church.

Next year's event is being held on **Saturday 11th May** and the closing date for entries is the **20th April**. Everyone who walked last year automatically receives an entry form and those whose entry had to be declined are sent first. If this walk appeals to you but you are uncertain about following a route description, be reassured that many walkers who have not done this before have not found any difficulty. If you want to stretch yourself a little over a distance you have not tried before, this event is for you. If you want any further information please contact me for an entry form as this contains all the relevant information. I stress that we do have to decline entries if we exceed our maximum number so don't delay in submitting your entry and be aware that **entries will not be accepted on the day**. I can be contacted at 125 Pilgrims Way, Kemsing Tel: 01959 524725 or email; trevorpauline@tiscali.co.uk.

Pauline Mallinson. Walk Organiser

DOWN TO EARTH



Professional Tree Management

All aspects of tree care [planting to felling]

Hedge Cutting

Stump Removal

Over 30 years experience

Logs

For help & friendly advice call our office

01959 524 623

The Oast, Preston Farm, Shoreham,
Kent TN14 7UD Tel.

Email : enquiries@downtoearthtrees.co.uk

Website : www.downtoearthtrees.co.uk

SGE (SEAL) LTD

[Seal Engineering]

Specialist in:
House Moves, Basement Finishing,
Basement Conversion, Water Tanks,
Wood Structures, Brick Finishing,
Roofing.

Planting & Pipe Fixings, Cracking,
Gutter, Downpipe, Pool Repairs etc.

We also provide a Professional Service in
Electrical Installations and Landscaping
and Groundworks, Driveway, Paving etc
and Seal Fabrication, Finishing

Delivery & fitting services available

01959 524 623
0800-828282-0800-0700
SAT. 0800-1200
SUNDAY CLOSED

The Oast, Preston Farm, Shoreham, Kent TN14 7UD

Tel: 01959 524 623

Email: info@sge.co.uk

THE ST EDITH CLUB

Affiliated to the CIU

Evenings 7 -11 p.m. & Sunday Lunchtime 12 -3.00 p.m.

Sunday Evening 7 -10.30 p.m.

Why not come along and join us.

Membership open to anyone

Over the age of 18.

Full membership £10.

DARTS

QUIZ NIGHTS / LIVE ENTERTAINMENT

Please Phone 01732 762 755 for details or call at the door

CIU Associate card £3.00

There is a £6.00 refundable door fob deposit.

Raffles every Friday night & Sunday Lunchtime.

Next to the Village Hall, High Street, Kemsing TN14 6NA.

No joining fee

Over 60 £5.00

BINGO
POOL

CRIB
SOLO

News from Cotmans Ash

ALL CHANGE

December is a quiet month in the kingdom of singing birds at Cotmans Ash, but for many reasons I enjoy the quiet solitude of these long nights of mid-winter – it is good to be in the woods at sundown to hear the wood pigeons clatter in to roost, a cock pheasant his last crow of the day, a startled blackbird and the whispering chatter from the tiny goldcrests gathering together for warmth in the fir trees and rooks on evening flight with the noisy jackdaws forever arguing and shouting with one another as they cross the sky in the last light of the day. Now flights of silent wading birds cross the sky – could be mallard, pochard, teal, even widgeon – not a sound do they make in the fading light.

From this same spot where I wrote my note a year ago, my view was over the Kemsing Vale to the ‘greensand ridge’ of the Chart, the sweeping canopy of tree-tops over Cockneys Wood and a checker board of green meadows sprinkled with sheep – the view remains – the sheep went during the year causing anxiety and concern in the Village. Who would buy? What would be the future of the Farm? Kemsing had become accustomed to sheep and the spectacle of spring lambing in March. There have always been strong links between the farm, the Village and Jenny Pattullo and her family for generations.

Recent weeks have come up with the answer – the answer to a prayer for many of us. ‘St Clere’ whose farming and land management is for all to see on the eastern flank of the Village –while the footprints of Mark Collet and the Normans is all over the east end of Kemsing, the School, Village Hall, the Recreation Ground as well as so many beautiful rare trees, I think we can all breathe a sigh of relief. Nowadays farming is high tech and fast moving – things will never be the same as it was, but I am sure we accept that and wish Eliza and her team well!

LEST WE FORGET By name only do we remember those who gave their all in two world wars – just once a year are we reminded of them. Behind every name there is a young face. To remember them Kemsing closes down for just 2 minutes once a year –Reveille, the Last Post, the standard dipped, the old warriors march off with colours raised and Kemsing returns to normal for another year.

Time now to wish you all well for Christmas – Kemsing is such a special place to be for the festival – so much going on, so a very happy Christmas to you all from Heather and I at Cotmans Ash.

BRIAN DOE

KEMSING SCHOOL REPORT

Another Autumn and another packed term at Kemsing Primary School. We said goodbye to Mr Edwards and welcomed Mrs Bracken to our team; she is teaching year 3.



Clubs have got underway with staff now running over 20 clubs either at lunchtime or after school.

Mrs Hill continues to organise piano and guitar lessons and Miss Campbell has taken on choir who will be performing at Ightham Mote later in the term.

Year 6 went off to Rippledown, near Deal for our residential trip. The children took part in a variety of

activities; pond dipping, rock pooling, environmental art, map and compass work, and visits to Dover Castle, the wartime tunnels and St Margaret's lighthouse. We also visited Dover Coastguard, where we were allowed into the operations room to witness how they manage 400 vessels crossing the Channel each day! We finished off the week at Canterbury Cathedral in costume, re-enacting the story of Thomas Beckett.



The whole school had photos taken and designed Christmas cards! In early October we had our Harvest Festival Service at the Church. Parents were packed in and enjoyed a variety of songs and poems performed by all the classes. The school council decided that the money collected (£148.08) should be split between St. Mary's and Barnados Young Carers.

We had a non-uniform day to raise money for the OAKS Christmas Dinner which will be held at the school at the end of November. The Year 6 children will provide the entertainment and waiter service for this too!

Finally, Christmas is coming which is a great time of year to be in school. The PTA are organising the Fayre. Blunderbus Theatre Company are visiting and there will be the usual class parties at the end of the term. Key Stage 2 are going to the Polka Theatre to see the musical *The Wind in Willows*. We hope that parents will join us for Carols by Candlelight in the church Celebration of Christmas by Key Stage 2, and the Key Stage 1 Nativity with a whole host of heavenly angels.

Mrs Helen Brown Key Stage 2

Success at 11 for boys and girls

At Russell House School in Otford, all 18 children who took the 11-plus exam for secondary school entry in September 2012 passed with an average score of 410. Six children gained full marks.

We ensure children are well prepared for all exams at 11, while enjoying a full curriculum where music, sport and drama are also pursued to high levels of achievement.

Children thrive at Russell House within a happy, friendly and welcoming environment where we establish positive attitudes to learning and life which will benefit them long into the future.

We welcome boys and girls from the age of two and children join at other ages where spaces are available. Call to find out more.



Russell House School

Station Road, Otford, Kent TN84 5QU

Tel 01959 523832 www.russellhouseschool.co.uk



WELHAM JONES

Funeral Directors & Monumental Masons

01732 742400 or 01959 525440 : 01732 780600

105 London Road, Sevenoaks, TN11 1DU

43 Station Road,
Borough Green, TN75 5AH

www.welhamjones.co.uk

An Independent Family Owned Company

24 hour
service

Pre-paid funeral
plans available



FAMILY MILESTONES

Baptisms

Nelly Anderson on 9th September 2012

Aiden Russell on 9th September 2012

Elliot Russell on 9th September 2012

James Mason on 21st October 2012

Jasmine Ward on 28th October 2012

Flavia Hitchings on 28th October 2012

Edward Mark Kent on 25th November 2012.

Weddings

Jonathan Nash and Nicola Nelson on 8th September 2012

Stephen Lockwood and Clare Lansley on 22nd September 2012

Neil Douglas and Joanna Knight on 29th September 2012

Deaths—Rest in Peace

Albert Ashdown (97) on 8th January 2012

Iris Syrett (84) on 4th March 2012

Ron Pryer (91) on 18th September 2012

David Robinson (41) on 24th September 2012

Kathleen Stevens (90) on 23rd October 2012

Doug Price (85) on 29th October 2012

Robert Swift (69) on 30th October 2012

Joyce Ford (85) on 5th November 2012

From: **Kemsing Parish Magazine. January 1963**

The **K.A.D.S** performed “The Peaceful Inn” by Denis Ogden. The play was directed by Olive Hamlyn and featured Kath Ford, Len Eastwood, Tom Dew, Reg Ford, Chris Thomas and Barbara Quinton. The **British Legion’s** Poppy Day collection realised £147.

The **Mother’s Union** held a musical evening in the Church Hall. Carol Toogood, Betty Weaver Mrs Magrath and John Fielden sang, accompanied by Eileen Hutt. Mrs Merrifield played a piano solo and Messrs Fielden and Hoare joined forces with the Vicar (the Reverend Young) to sing a trio from “The Mikado”. The **Evening Womens’ Institute** held their AGM. Mrs Wilcox was re-elected President and the Committee for 1963 was Mesdames: Gifford, Hope, Summers, Thomas, Lloyd, Carter, Weaver, Dixon and Harland.

From “**The Well**” **Spring 1988**

The **Kemsing Singers** had produced an “Old Tyme Music Hall” to packed audiences at the St. Edith Hall in November. The entire cast displayed a high level of competence. The Williamson family devised, compiled, produced, performed and stage managed the entire show. Music was in the capable hands of Eileen Hutt and Peter Lang was an excellent chairman.

The **Gardener’s Society** heard a lecturer from Hadlow College in December talk about the aftermath of the hurricane of October 1987. He emphasized the opportunity presented to replace trees especially as regards their location and potential height.

A **Confirmation service** took place at Rochester Cathedral on 1 December at which 16 people from Kemsing were confirmed by the Bishop.

DMB LAW

Solicitors

Helping you move forward



Property & Conveyancing
Company & Commercial
Wills, Trusts & Probate
Family & Matrimonial
Dispute Resolution
Employment

For enquiries please contact

01732 228800 E-mail: legal@dmblaw.co.uk

**The Old Bat & Ball, St. John's Hill, Sevenoaks Kent
TN13 3PF**

Visit our website: www.dmblaw.co.uk

CRAFT GROUP MAKES EVERYONE 'SMILE'



St. Mary's Craft Group recently enjoyed a talk from 'SMILE' a Christian charity which, amongst other things, arranges for the collection and transportation of shoeboxes of gifts to children in villages, schools, refugee camps and centres in the countries where they work. Shoeboxes are distributed according to need and regardless of nationality or religious beliefs. Over the years, the craft group have made many items, and this year were able to give four boxes of gifts to SMILE. In addition a large number of blankets and jumpers have been knitted which will be given to Blythwood a Christian charity based in Rochester. Indeed this year alone, the ladies have made 34 bags, 69 girls scarves, 51 boys scarves, 28 dressed toys, 215 mittens and 12 hats! The Group are always happy to receive donated items such as these and are always pleased to receive any part knitted garments or wool to enable them to continue their good work.

The Craft Group meets in St. Mary's Church Hall on Thursdays between 2pm and 4pm and new members and visitors are always welcome.

Village Diary

December

- tba** Childrens free craft sessions at the library during Xmas holidays, phone 01732 762199 for days/ time
- 7th Kemsing Wildlife Group 'Christmas Shindig' in St. Edith Hall at 8.00 pm
- 11th Kemsing Gardeners Question Time St. Edith small hall 8.00 Answer panel will be Brian Doe and John Milligan from Kemsing and Brian Everest from Westerham .
- 11th M.U. Christmas Party 2.00pm St. Mary's Church Hall details from Elizabeth Waters 01732 761431
- 12th W.I. Christmas Party St. Edith small hall 7.45.Details from Heather Porter on 01959 523543
- 13th Pre-schools Story Time at the library, free every Thurs. in term time only 10.30-11.00
- 13th Talk Time for adults with free coffee every Thursday at Kemsing Library. 10.30-Noon.
- 14th) Kemsing Singers Christmas Concerts St. Edith Hall 7.30 ticket available from 9 Cleves Rd Kemsing. Phone
- 15th) 01959 523752. Adults £8, Seniors £6. Children £4 profits to be donated to Sevenoaks Blind Club.
- 16th At 7pm.St. Mary's, Kemsing, Carol Service.**
- 20th Trefoil Guild 'Celebrating Christmas' St. Mary's Church Hall 7.45
- 24th 2pm. St. Mary's, Kemsing. Tiny Tots at 2. Special Crib Service for pre-schoolchildren. 3.45pm. Crib Service, followed by candle-lit procession to The Well for Carols. 11.30pm. Holy Communion.**
- 25th 9.30am Family Communion service for Christmas Day.**

January 2013

- 3rd Talk Time for adults with free coffee every Thursday 10.30-Noon.
- 9th W.I. St. Edith small hall 7.45 talk by Stuart Robinson 'The Dark Side of London' Details from Heather Porter on 01959 523543
- 11th Blood donor session. Tesco Riverhead phone 0300 1232323 to book an appointment or drop in between 1.30-4.30 and 5.30-7.30
- 17th Trefoil Guild AGM St. Edith Church Hall 7.45

February

- 1st Kemsing Heritage Centre 7.30 St. Edith Hall, talk by Mrs. Threader 'Rochester Bridge Trust' Non members £2.50, members free, but all will need a ticket from E. Cole 01732 761772
- 2nd Friends of St. Mary's AGM, the Church Hall 2.00pm
- 5th Blood donor session United Reformed Church Hall Sevenoaks phone 0300 1232323 to book and appointment or drop in 2.0-4.30 and 5.30-8.0
- 8th Wildlife Group 8.00 St. Edith small hall talk by Barbara Darby 'Wild Life of the World' £2 entrance fee
- 13th W.I. St. Edith small hall 7.45 . Talk by John Young 'India's Big 5—Wild Life of India' Details from Heather Porter on 01959 523543
- 13th **Ash Wednesday service. St..Mary's Church, Kemsing, 7.45pm.**
- 16th Heritage Centre AGM. St. Edith small hall 2.30pm. Everyone welcome. Come and hear about plans for 2013.
- 21st Trefoil Guild meeting 7.45 St. Edith Church Hall
- 22nd Hospice in the Weald Quiz, St. Edith Hall, 7.30pm, £8, Bring your own food, drinks and glasses. Ring Joyce 01732 761606

March

- 1st Kemsing Heritage Centre 7.30 St. Edith hall, talk by Chris. McCoe 'War Time Diary's of a South Coast Woman' Members free, non members £2.50 but all will need a ticket from E. Cole 01732 761772
- 12th Kemsing Gardeners AGM an evening with Brian Doe 8.00 St. Edith small hall
- 8th Wildlife Group 8.00 St. Edith small hall, talk by Robert Canis 'Wild Life of the North Downs' £2 entrance fee
- 13th W.I. St. Edith small hall 7.45 talk by Dennis Chambers 'Kent Ghosts'
- 15th Blood donor session Sevenoaks Community Centre phone 0300 1232323 to book and appointment or drop in
- 21st Trefoil Guild meeting 7.45 St. Mary's Church Hall.
- 23rd PTA Easter Egg Bingo. Details to be advised.
- 27th Annual Parish Meeting, St. Edith large hall 8.00. All Kemsing residents welcome.**



Able Decorators

Specialists
in interior &
exterior painting
& wallpapering



Call now for a
FREE ESTIMATE
01732 456700
07946 280453



Member of the
Federation of
Painters and
Decorators

or email abledecorators.com