

THE WELL

Kemsing Village Magazine
with news from Woodlands



Autumn 2012 No 187

CONTENTS - The Well Autumn 2012 No 187

Olympics 2012	3	Life on the Hill	19
Vicar's letter	4	PCSO Adrian Fromm	21
Church Services	5	Kemsing School Report	23
Memorial to Don Eley	7	News from Cotmans Ash	25
Emergency phone numbers	9	Rainbows & Church Carpet	26
Parish Council News	11	Family Milestones	28
News & Notes and PTA News	13	Kemsing Festival Plaque	30
Chancel Repair Liability	15	St. Mary's Church Choir	30
Monty Parkin	16/17	Village Diary	31

Editorial Team:- Doreen Farrow, Janet Eaton & Rosemary Banister.

We reserve the right to edit [i.e. cut, précis, alter, correct grammar or spelling] any item published, and our decision is final.

Cover picture shows the Well area in Summer.

Our thanks are due to the Kemsing Gardener's Society for their care and attention to this colourful area.

Cover Picture by Janet Eaton

COPY FOR NEXT ISSUE

Please submit any items or articles for the next issue of The Well before 1st November 2012 to welleditors@hotmail.co.uk

THE WELL - is published and distributed free, four times a year by the Parochial Church Councils of St Mary's Church, Kemsing and St Mary's Church, Woodlands, to encourage and stimulate the life of the community. The views expressed in the magazine do not necessarily represent official church opinion or policy.

If you use a computer to type your article, it would be extremely helpful if you could Email it to: welleditors@hotmail.co.uk or send to the Editors c/o Poppies Cottage, 3, St. Edith's Road, Kemsing TN15 6PT,

For postal subscriptions, contact Debbie Pierson—01732 762033

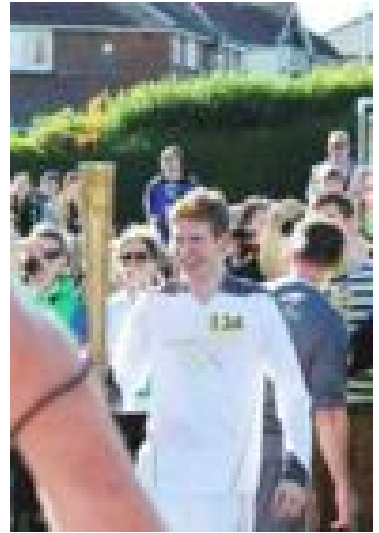
OLYMPICS 2012



On Friday 20th July, many Kemsing residents made their way to Seal to see the passage of the Olympic torch. A huge crowd gathered on the High Street to see the torch make its way through Seal and on to Sevenoaks and Riverhead where it was then 'bussed' to Surrey. The police outriders were a great hit with the crowds and spent a long time 'high fiving' with the children (and some adults!)

Tom Bosworth of Cotman's Ash was a London 2012 Olympic hopeful and came within seconds of fulfilling his Olympic dream on the 8th June. Tom finished 14th in the IAAF Challenge Race in La Coruna, Spain in a time, more importantly, of 1hour 24minutes and 49seconds for the 20k race walk. This was just 19 seconds away from the Olympic B qualifying standard for Team GB.

After such disappointment Tom was given the opportunity by one of his major sponsors Lloyds TSB to carry the Olympic Torch through Potternewton in Leeds on June 24th. Speaking after this event Tom said 'this was an experience I cannot put into words, it's an overwhelming feeling of passion for the Olympic games and community spirit. It makes up a little for missing out on the Games.'



Tom's next aim is the 2013 World Athletics Championships in Moscow. He commented 'missing out on the Olympics was a massive disappointment but it has made me stronger and more determined to make the World champs next year, and having the Olympic torch gave me another career highlight I will never forget.'

Vicar's Letter



Dear Friends

The Olympic Games are thought to have begun in 776 BC. Initially, the games were a one-day event, extended to run over three days, and then five. Only a few sports were involved – mainly sprinting, long-jump, discus, wrestling, boxing, and horse / chariot racing. Some extraordinary heroes emerged out of these games, such as Milo of Croton. He was reputed to eat 10kg each of bread and meat daily, once carrying a four-year old bull on his shoulders, before slaughtering and eating the lot!

Those ancient games may seem far removed from the events of our own era. We now take 7 years to plan over a month's activity. There are many new sports, large-scale sponsors, involving athletes from nearly every nation. Yet they still take place every 4 years, and the Games still idealise a united human race, choosing friendly competition in sport over lethal rivalry in war. In Greece, all hostilities were suspended for the duration of the games.

One only had to watch the opening ceremony to enjoy seeing such diverse people, enjoying coming together. Sadly, though, the best the Games can achieve is to invite us to suspend our hostilities temporarily. No Games were held in 1916, 1940 or 1944; it was too much to ask to stop fighting. Even in London 2012, we've felt the tensions as the wrong Korean flag was shown, or as the Lebanese and Israeli athletes were asked to practice in the same gym. The Games cannot actually unite us, or deal with enmity between nations.

To achieve true peace between nations needs something much bigger than the Olympic Games. The Games give us a yearning for what life could be like; they don't deliver it.

One of the biblical names for Jesus is "The Prince of Peace". Jesus traced our hostility towards others back to its source – each of us wants to be in charge of our own lives, rather than letting him have control. His death dealt with the enmity between us and God. Doing that allows us to recognise Jesus' right to be in charge. As his reign spreads across the world, peace between nations follows, as we all agree whose wishes matter instead of fighting over which of *us* will be in charge.

It doesn't happen overnight, but Jesus' reign will bring true peace, rather than just giving us a hunger for it as we temporarily set aside our differences.

With every blessing.

Your friend and vicar,

A handwritten signature in black ink that reads "James". The letter 'J' is large and stylized, with a long horizontal stroke that extends to the right and then loops back under the 'a'.

James Oakley

St MARY the VIRGIN PARISH CHURCH, KEMSING

www.kemsingwithwoodlands.org

Vicar	Rev. James Oakley	01732 762556
Wardens	Ray Parton	01959 523045
	Jean Walker	01732 761646
Parish Office	Margaret Robarts	01732 761351
Readers	Mary Quenby	01959 522079
	Philip Walker	01732 761646
	Ruth Mason	01959 524486

The Parish Office (in the Church Hall) is open from 10am-noon on Mon. and 10.00 - 5pm on Thursdays. Answerphone at other times is 01732 761351.

Apart from 5th Sunday, the pattern of services is as follows:

- 08.00 Communion in traditional language
- 09.15 Sung Communion service (followed by coffee in the Church Hall)
- 10.30 Morning Service (with coffee in the Church Hall beforehand) Sunday Special on every Sunday apart from 1st Sunday of the month.
- 18.30 Evening Service (Evensong twice a month, a number of other formats twice a month)

The combined Communion service on the 5th Sunday will usually be held in Kemsing Church because of seating and parking limitations in Woodlands.

The service pattern on this Sunday will be:

- 08.00 BCP Matins
- 09.00 Breakfast in the Church Hall
- 10.00 Combined service with Woodlands
- 18.30 Evensong

Remembrance Sunday 11th November
There will be the usual Church Service
in St Mary's at 9.45am
followed by the Act of Remembrance
at the War Memorial at the Well at 10.45am.

SERVICES at St. Mary's Woodlands

1st Sunday	4.30	Evening Praise
2nd Sunday	11.30	Morning Praise
3rd Sunday	4.30	The Lord's Supper [Informal Communion]
4th Sunday	11.30	Holy Communion
5th Sunday	10.00	Combined Informal Communion Service for both Churches, usually to be held in Kemsing

Children are warmly welcomed at all of our services. Coffee is served from 11 a.m. Evening Services are followed by a light meal.

Lester Electrical Services

Your Local Electricians

Tel: 01959 52 4032 Mob: 07952 631 708

www.lesterelectricalservices.co.uk

- ✓ Lighting Sockets & Power
- ✓ Fault Finding & Repairs
- ✓ Consumer Units, Periodic Inspections & Testing
- ✓ Garden Lighting & Power
- ✓ PAT Testing & Safety Testing
- ✓ Associated trades available for complete projects and much more ...
- ✓ Helpful & friendly advice, ideas & suggestions
 - ✓ Free no obligation estimates
- ✓ Free appraisal of your electrical system

just give us a call

Ray Lester 01959 52 4032



A J DOE TREE SURGERY

The complete tree care service
For all tree work including stump
grinding.

Fully qualified and insured.

01622 728 574

01732 761 726

COPLESTONS

Chartered Accountant
& Registered Auditor
1, West End, Stroud, G10 2PL

Local firm serving local business. Supply
Accounts, audits, company & personal taxation,
company incorporation & general business
advice. Chartered Accountants in any of our firms are:

Tel : 01732 763 888

Fax : 01732 763 824

The Aerial Man

Family Run Business

Welcome to the Digital Age

H.D. REALITY DIGITAL

AERIAL INSTALLATION

NO CALL OUT CHARGE



KEMSING

01732 883542

gardenscape

Home deliveries of
Garden and
Landscaping products

Topsoil • Compost • Mulch
Bark • Manure • Manure
Turf • Lawn Dressings • Grass Seed
Play Area Surfacing • Retard Bark
Ballot Sandbags • Pathway Materials
Decorative Stones • Aggregates

Order online at
www.gardenscape.co.uk
or FREEPHONE 0800 809663

Memorial to Don Eley 1926—2011

On Saturday, 18th August 2012, members of the Heritage Centre Association and Parish Council, met with Don's family when they unveiled a plaque in memory of Don's efforts in helping the Parish Council to acquire the land for the Kemsing Down Nature Reserve.



At the time in 1976, Don was Chairman of Kemsing Parish Council and saw that this would be a once in a lifetime opportunity to acquire the land for

future generations of the village to enjoy in perpetuity.

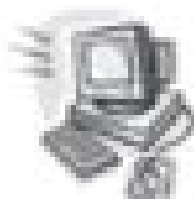


The picture here shows Don's son Philip and his daughter Janet unveiling the memorial on the Downs above the village.

As the plaque says 'His memorial is all around you'.

Need help with your computer?

PC Support



Web Design

Viruses Removed
Systems Overhaul
Internet Services
Network Support

Software & Hardware
Installation / Upgrades
Troubleshooting
Repairs

Friendly Professional Advice & Support for Business & Home User
Call Andrew Ormer

01732 742 454 or 07 957 648 461

Email: enquiries@prospere.co.uk : www.prospere.co.uk

Sandalls

01959 522 464

Hair & Beauty

6, The Parade, Dynes Road,
Kemsing, Kent TN15 6RE

Late Nights
Free Consultations
Gift Vouchers Available
All Major Credit Cards Accepted
Free Parking

Retailers of : Dermalogica
OPI
St Tropez
Phyto Hair

HOT STONE
MASSAGE

dermalogica


ST. TROPEZ
The Ultimate Tan

The Many Faces of Love, Loss and Happiness

- Individual & Couple Relationship Counselling
 - Marriage Guidance Counselling
 - & Specialist Bereavement Therapist
- Specialises in working with individuals and professionals
who are ready to be empowered and make positive
life changes in Sevenoaks*

Helen Mia Harris BA, PGdip, BACP Reg
01732 453758 or 07882 369663
www.psychotherapistsevenoaks.com

CHAPMAN'S CHIMNEY SWEEP

SEVENOAKS

VACUUM AND BRUSH

PROMPT CLEAN SERVICE

ALL AREAS

01782 325 370

101—national non-emergency number for police

You can now call Kent Police for non-urgent issues on **101**. The number is available 24 hours a day, 7 days a week. To make it quicker and easier for the public to get in contact with their local police, 101 has been introduced in England and Wales. It gives a single, easy-to-remember number to call to report crime and other issues which do not require an emergency response. You can also call 101 to speak to your local neighbourhood officer, to make a general enquiry or to make us aware of a policing issue where you live.

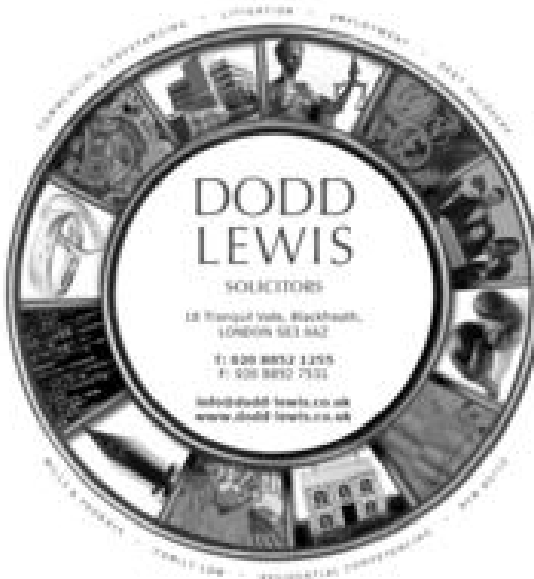
What classes as an emergency?

Calling 101 for situations that do not require an immediate police response helps keep 999 available for when there is an emergency. An emergency is when a crime is happening, someone suspected of a crime is nearby, someone is injured, being threatened or a life is at risk, or there is a traffic incident involving personal injury or danger. Each call to 101 will never cost more than 15p—no matter what time of day you call, how long your call lasts or even if you call from a mobile. We do not receive any of the call cost.

Kent Police

THE SEVENOAKS ARCHERY CLUB
Invite applications from experienced Archers and beginners. Coaching arranged.
Enquiries to: Mike Davies
(Membership Secretary)
48 Childsbridge Lane, Remsing
Sevenoaks, Kent TN15 6QR
01732 763266
email: membership@sevenoaks-archery.co.uk
www.sevenoaks-archery.co.uk

R. & I. Autos Ltd
Vestry Trading Estate
Oxford Road, Sevenoaks
M.O.T. Testing
Repairs & Servicing
M.O.T.s at our
Special Discount Price
01732 450 610



DODD LEWIS
SOLICITORS
18 Finport Way, Blackheath,
LONDON SE3 8AZ
T: 020 8852 1255
F: 020 8852 7321
info@dodd-lewis.co.uk
www.dodd-lewis.co.uk

Wherever life takes you...

Established in 1992, our longstanding reputation for excellence and our friendly manner ensure that you get the very best legal service. Our specialists are:

- Commercial Property
- New Build Developments
- Residential Conveyancing
- Family & Matrimonial Law
- Wills & Probate
- Contested Wills & Probate
- Commercial & Domestic Company Remedies
- Employment Law
- Debt Recovery

Our clients come first, our priority is to minimise delays and to provide a stress free environment from the outset. With business and personal clients both locally and worldwide, we understand how best to protect your interests.

...we're here to help

Report from Kemsing Parish Council

The **Annual General Meeting** of the Parish Council was held on Wednesday, 23rd May 2012. Mrs. Marie Cole was re-elected as Chairman and Mr. Godfrey Croughton as Vice-Chairman for the ensuing year. The Parish Council has adopted a new **Code of Conduct** under the Localism Act 2011. Sevenoaks District Council's recent **Community Governance Review** concluded **NOT** to adopt the Town Council's proposal to 'take over' various parishes.

We would like to extend a warm welcome to our new Police Community Support Officer, **PCSO Adrian Fromm**, who has been appointed in May 2012 (see page 21 for advice from Adrian).

Play Place holds youth club session for 12-19 year olds every Monday evening during term time in the Church Hall at 7-9p.m.

Connexions Kent offers confidential information, advice and guidance to young people in Kent on learning, living, working and finding jobs after school education. The Parish Council financially supports a 'Job Club' in the St. Edith Hall on Wednesday afternoons between 1.30 and 4.30 p.m. These sessions are by appointment only. Please call 0800 432 0207 for further information.

Following a review of existing **PACT** (Partners and Communities Together) committees, Sevenoaks District Council identified a number of these committees which had fulfilled its purpose. Kemsing was one which has been disbanded for the time being. Thank you to all the residents who came along to the meetings to express their concerns.

We are dismayed to report that our play area at the Common Field Recreation Ground was the subject of a serious **criminal damage** attack in June. The damaged items were removed from the site for safety reasons and are currently being repaired and it is hoped that these will be replaced soon. Police investigations into the matter are on-going.

The Parish Council received complaints from residents that the metal **youth shelter** at the Common Field Recreation Ground is being used as a football goal. The Parish Council is currently consulting with residents, young people and the Police to resolve the issue. Various options are being explored, but meanwhile, we would ask young people not to kick footballs against the shelter. Should this behaviour continue, the Parish Council may have to consider removing the shelter.

The **Clerk's Office** is in St. Edith Hall, High Street, Kemsing, Sevenoaks, Kent, TN15 6NA. **Office hours** are: Monday to Friday mornings between 9.00 a.m. and 1.00 p.m. There is a 24 hour answer phone (01732 762841) if it is more convenient to leave a message or email to: kemsingpc@tiscali.co.uk. Visit our **website**: www.kemsingpc.kentparishes.gov.uk
Parish Council Meetings will be held on: September 19th, October 17th & November 21st.

Yolanda Tredoux, Parish Clerk



National
Trust

Ightham Mote

Last opportunity to see some parts of Ightham Mote before 2013

Ightham Mote has further exciting events throughout October, including more Wild Child Woodland Trails in preparation for the Half Term.

In preparation for Halloween there are two Ghost and Gourmet evenings taking place on 27th October and 3rd November. This event is a unique opportunity to take a ghostly tour of the house by candlelight followed by a 2 course buffet supper in the Mote Restaurant. Places are £35.00 per person and can be booked through the Mote Restaurant on 01732 811314.

Those of you interested in crafting might enjoy the 2 day Crazy Patchwork course taking place on Friday 19th & 26th October. Places on the course are £60.00 per person and can be booked through the Ightham Mote offices on 01732 810378 ext.100.

The Mote Restaurant will also be hosting the last of this year's All You Can Eat Pudding Evenings on Thursday 4th October and Thursday 1st November. Book places by calling 01732 811314 and speaking to a member of the Restaurant Team. £19.75 per person.

Don't forget on the 8th November Ightham Mote will return to partial opening from 11am to 3pm Thursday to Sunday and in December the open parts of the house will be decorated for Christmas. Our restaurant and shop will also be open during these times.

November will also see the new Munch and Learn programme start, with a series of lectures available. These are the details:

Wednesday 7th November - LUNCH

Blood, battles, marriage and the mote: The story of an Ightham Knight

Saturday 10th November – DINNER

Behind the scenes at Westminster Abbey

Wednesday 14th November – LUNCH

Tales, tidbits and trivia of Kent and East Sussex

Saturday 18th November – DINNER

George VI and "The King's Speech": The man behind the movie

Wednesday 21st November – LUNCH

Lewis Carroll - an Eminent Victorian.

Saturday 24th November – DINNER

Jubilee Jewels

Wednesday 28th November – LUNCH

Pubs of Kent

To book a place on one of these events please call the team on 01732 810378 ext 100.

Other events:

Thursday 11th October. Great outdoors Countryside walk. £1 per person

Saturday 27th and Sunday 28th October. Wild Child woodland trail. £1 per person

Saturday 3rd November. Winter Walk with the Warden. £1 per person.

Bookings for the above on 01732 810378 Ext.100

For more information see; www.nationaltrust.org.uk/ighthammote or call 01732 810378 ext 100

NEWS and NOTES

On Friday 28th September from 10.30 to 1pm there will be the 'Biggest Coffee Morning in the World' in aid of Macmillan Cancer Support in St. Edith small hall. Please come along and join in by bringing cake or biscuits, offering to help make tea and coffee or by setting up or clearing away, Sally on 01732 761956 or Carol Chiles on 761755 would be delighted to hear from you.

Joyce Course and her team are organising an Autumnal light lunch in aid of Cancer Research on Saturday 29th September in St. Mary's Church Hall at 12.30 for 1pm. This will be followed by Pauline Bennett speaking on 'For memorable fund raising moments....' Tickets priced at £7.50 are available from Joyce on 01732 761606 or Beryl Smith 01732 459859.

Kemsing Singers will be performing Christmas Concerts at 7.30 at St. Edith Hall on Friday 14th December and Saturday 15th December. Tickets, adults £8. Seniors and 'Friends' £6. Children £4. These concerts will be under the directorship of the Choir's new Musical Director Sara Hemsley. Any profits will be donated to the Sevenoaks Blind Club. Tickets will be available from 7th November at 9 Cleves Rd., Kemsing, 01959 523752.

St Edith Club are holding their Beer Festival on Friday 19th, Saturday 20th and Sunday 21st October 2012. A selection of real ales will be available for you to try. Come and join the Club for this special event.

PTA NEWS

The PTA would like to thank the village for all their support of the Kemsing Village Fete hosted on the School Field on 30th June. We raised over £9,400 for the School which was an incredible feat and we very much appreciate the support we received from the community.

We are currently working hard fundraising to upgrade the School's ICT suite and also refurbish the swimming pool roof so your support is greatly appreciated!

The following events are scheduled to take place later this year and the PTA would like to warmly invite all families and friends to join us, have fun and help raise funds to benefit the children of Kemsing School.

Sunday 16th September Dragon Boat Festival

At Bewl Water, Tunbridge Wells. A crew of 20 parents and friends of Kemsing School will be participating for the first time in this prestigious event. Please show your support by sponsoring us, see: <https://mydonate.bt.com/charities/kemsingschoolpta>. You are also most welcome to cheer for us on the day!

Friday 2nd November 2012 Fireworks Spectacular

Gates open at 6.30pm to buy your refreshments and glowsticks ready for a 7.30pm blast off

Saturday 1st December 2012 Christmas Fayre

This will start off your Christmas festivities and is guaranteed to be a fun afternoon for your family and friends, as well as a great place to start your Christmas shopping. There will be a large range of stalls and attractions as usual for all, including the grand raffle and Silent Auction.

For further details of all events please go to www.kemsing.kent.sch.uk



EKW LEGACY PLANNING
Local Will Writing Service
IS YOUR WILL UP TO DATE?



A NEW WILL CAN SAVE INHERITANCE TAX AND PROTECT YOUR HOME AND SAVINGS IF YOU GO INTO LONG TERM CARE

For a free Will review and help with all types of Wills, Trusts, Probate and Lasting Powers of Attorney

Call our local specialist Tony Mann on 01732 389294 for a FREE consultation
 tony@ekwlegacyplanning.co.uk www.ekwlegacyplanning.co.uk

KEMSING WATER SOFTENERS Consider the benefits:

- Saves heating bills - No heat loss on top of showerbath
- Longer lasting tiles - Soap & detergent more effective by 50%
- Prevents limescale on kettles, taps & showers - Reduces water to clean
- No restriction for the mortgage market - No electric softener

"Harveys" block salt, tablets or granules delivered or collected

For more information telephone
 01732 766 471
 www.kemsingsofteners.co.uk



Kemsing Sports Pavilion

Charity No. 294120

www.kemsingpavilion.org.uk

Planning a children's party?

Well - we can help!
 We have a lovely, large room
 With self-contained kitchen
 and toilets.

Suitable for children's parties
 up to age nine.

Want to keep fit?

Have you tried playing squash?

We have a squash court available for hire at £6.00

For a 45 minute session.

Showers & changing rooms available. To find out more & to book a court, ring us.

So call us now on : 01732 762 865
Sir Mark Collet Pavilion, Heaverham Road, Kemsing

CHANCEL REPAIR LIABILITY

“Chancel Repair Liability” is something many of us have never heard of, but is a subject that St Mary’s Kemsing is having to think about at the moment. Because there’s a fair amount of confusion around, we thought we’d write a brief introduction.

What is Chancel Repair Liability (CRL)? Historically, a parish church would own certain land (such as “glebe land”), and the income from that land would be used to maintain the chancel of the church (“tithes”). Over time, much of that land was sold into private ownership, but the liability to pay for essential repairs to the chancel passed on with the land. Therefore some land owners today are liable for a certain proportion of the costs of such repairs.

How would I know if my land carries this liability? This is the problem. Most people have no entry on their title deeds that answers this question. In a 2003 ruling, the Lord Chancellor established that CRL is enforceable even though the land deeds do not mention it. Some people may have CRL, but be unaware; others may have been advised by their conveyancing solicitor to take out insurance against having to fund chancel repairs, when in fact they did not need to.

The 2003 ruling also aimed to clarify matters, by giving a deadline of 13 October 2013. By this date, parish churches must register their CRL with each owner’s entry at the Land Registry. This will end the uncertainty, as then you will know for sure whether you are liable.

How does this affect Kemsing? We’re trying to find out exactly. There is former tithe land in Kemsing, so there are land-owners who have CRL. The Land Registration Act (2002) requires us to register our interest in all the relevant pieces of land. We have until October next year to do so. If we do this, it doesn’t make someone’s land carry a liability; rather it makes the liability, which has always been there, explicit.

Can’t Kemsing Church waive these rights and not register any land? Parish Churches are registered with the Charity Commissioners, which means we are required under charity law to act in the best interests of the charity. We need the Commissioners’ permission to overlook any CRL that we could register. We are obtaining professional advice on how to make that case as strongly as we can. At the same time, we are joining other churches to lobby for a change of the law.

However, if the law stands and the Charity Commissioners do not grant us an exemption, we have no choice but to register all affected land. Because we only have a year, we may have to start the processes of registration whilst we campaign.

How likely am I to need to pay out? That is hard to say. Kemsing Church has just had its 5-yearly inspection, and it is in good condition. The last time that relevant repairs to the chancel were carried out was in the 1970s, and the costs were met in full by a private donation.

What happens next? We’ll keep updating everyone about this, as soon as we know more. At this point, we wanted to start explaining what all this is about. If you have any questions, please get in touch, although questions about specific parcels of land will not be answerable at this point.

James Oakley

MONTY PARKIN

It's hard in a village like Kemsing, being so close to London, to find anyone who was born, grew up and still lived in the same area, let alone in the same house, but it could be truly said of Monty that he had Kemsing right through him like the lettering in a stick of rock. However, Monty was so much more than just a village resident – he attended Kemsing School, then Bromley Grammar School before his artistic talents came to the fore and he then attended Beckenham School of Art. His career as an artist was covered in the Summer 2011 edition of *The Well* but, from the point of view of the Kemsing Heritage Centre, it is Monty's legacy of his vast knowledge of the village that we remember.



When Monty was born, the village was still a relatively small place, and it was only as he was growing up that the expansion started and became the village which we know today. Because of this, he remembered the time when the village was full of characters who could themselves remember a time when the village felt more isolated than its situation a mere three miles from Sevenoaks. People who could remember the first bus service, the arrival of electricity, a time when even Noah's Ark had nine shops. It was this that fascinated him.

His very first talk about the history of the village was as a part of the 1981

Kemsing Festival when he and Vic Bowden talked about some of the times and people of Kemsing who were already disappearing. Later as a founder member of the Kemsing Historical and Arts Society in 1986, he decided not to lose any time, but to start an oral history project. All the village 'old timers' knew Monty and were pleased to speak to him, reminisce about village characters and relate their memories of life as it had been in a quieter time. The result of this were the four *Kemsing Remembered* books. He then started giving talks about the history of Kemsing incorporating some of these stories. These talks were so well received in the village that other villages wanted to hear them, and eventually he became the marvellous speaker that we all remember. Hardly ever a note, fluent, informative and fascinating, he became one of the most popular speakers in the local area.

When in 1999 it was decided to form a Kemsing Heritage Association, Monty was one of the first people consulted and he was always fully supportive of its aims and aspirations. He also carried on talking to local people and two of his more recent books were about life on East Hill and the history of Sevenoaks Market, published in conjunction with the Heritage Centre.



The fact that we now have a purpose built Heritage Centre containing over 4000 photographs and thousands of documents all relating to the local area and regularly consulted by people from all

over the world anxious to trace their Kemsing roots, can be directly related back to Monty's enthusiasm for enquiring, documenting, photographing and collecting information regarding the village in days gone by. A retrospective book of Monty's art work from the 1960's to 2012 will be published in Autumn 2012 in memory of Monty.

We shall miss him enormously.



A memorial service to celebrate Monty's life is being held at 3pm on Monday 10th September at St. Mary's Church. His family also plan to hold a retrospective exhibition and publish some books of his work later in 2012 and during 2013, as well as establishing a charitable art prize in his name.

Janet Eaton



Oadbury Motors Specialising in

SERVICE & REPAIRS TO ALL MAKES

Laser Diagnostic equipment used. Air Conditioning

Washes to performance levels of showroom prices

Over 30 years experience

We offer super customer care. Our reputation speaks for it

Quality servicing at competitive prices. All credit cards accepted.

www.m.oadbury-motors.co.uk



Approved
Vehicle
Centres

01732 763 720

Unit 7, Clarendon Business Park, Waverley Lane, Kewstow, Hereford, Herefordshire HR12 6PL

Your Local Roofer

Specialists in flat-roofing works, gutter, fascias, gutters, tiling / slate works,
Chimney Flashings / Re-roofing High Performance Glassware, Felt & GYP/MA,
Fibre-glass System up to 25 years Guarantee



(01732) 370426

aquaguard

Email: chev@aquaguard.co.uk

www.aquaguard.co.uk

We accept



FALVEY BROTHERS LTD.

BUILDING CONTRACTORS

LEWIS ROAD, ORFINGTON, KENT, BR1 4AL

Tel: 01889 821550



Specialising in

- EXTENSIONS
- RENOVATIONS
- ALTERATIONS
- MAINTENANCE & REPAIR
- DECORATING

www.falveybrothers.co.uk

LIFE ON THE HILL

East Hill - Knatts Valley - Tinkerpot Lane - Romney Street



At St Mary's Woodlands we have been so pleased to celebrate two weddings this summer; Kelly Crouch and Warren Downey on 7th July and Ed Newman and Gillian King on 28th July. We would like to wish them every happiness in their future lives together.



**Kelly
&
Warren
(left)**

**Ed and
Gillian
(right)**



We are pleased to say that the **Woodlands Tots** are doing very well, due in great part to the expertise of Catherine Medlen. Don't forget that the new term starts on **September 12th**. On **Sunday 30th September at 11.30am** we will be holding our traditional **Harvest Service**. This is quite a special thanksgiving service when the church is full of colourful vegetables, fruit and flowers. It is followed by a **Harvest Lunch** in the Church Hall – a good opportunity to catch up with friends and neighbours. Traditionally we send any produce not needed to Deptford Reach, a drop-in centre in Deptford which helps people rebuild their lives that have been damaged by homelessness, mental illness, drug or alcohol abuse and social exclusion. Check out their website: www.deptfordreach.org.uk, to see what wonderful work goes on at this centre.

Anne Shelley

**DO YOU OWN A
RENAULT?**

Ren7oaks

***Service, Repairs
& MOT's***

*Unit G2, Chaucer Business
Park, Kemsing, TN15 6HU*

www.ren7oaks.co.uk

01732 761200

The Good Garage Scheme Member

EMMA PEACOCK BSc MChs SRCh
STATE REGISTERED CHIROPODIST / PODIATRIST
at South Park Medical Services, South Park, Sevenoaks,
TN13 1ED

A State registered Chiropodist specialising in
providing a comprehensive foot health care service,
including the treatment of corns, calluses, verrucae,
ingrown toe nails & nail surgery.

Morning, afternoon & evening appointments - Home visits

For an appointment ring **Sevenoaks 01732 742529**
(Parking facilities)

Acorn Osteopaths

Seal and Sevenoaks

General Osteopathic Council Registered
Louise Evans B.Ost; Patrick Norman B.Ost
Morn. & Evening Appts + Home Visits
For advice & appointments in Seal

Louise **07780 548143**

Patrick **07786 400260**

For appointments in Sevenoaks
Telephone **01732 450049**

THE BELL



Expires: John O'Sullivan

High Street, Kemsing

Tel: 01732 761 550

Good home cooked food
from 12 noon all day

Private Room available for Functions/Parties

Euromotors
FULL CAR SERVICING & REPAIRS



Diagnostic fault finding - Air conditioning service and repairs
Bodywork - MOTs - Collection & delivery available
& Courtesy car by arrangement.

Telephone: 01732 761844 www.euromotors.org.uk

At Chaucer Business Park, White Lane, Kemsing, Sevenoaks, TN15 6HU

STAY SAFE THIS SUMMER—KENT POLICE CRIME REDUCTION ADVICE (www.kent.police.uk)

Being the newly appointed Police Community Support Officer for Kemsing, I would like to take this opportunity to introduce myself. My name is Adrian Fromm and I have worked for Kent Police for over 20 years. Although this is a new role for me, I am looking forward to this new challenge and meeting the residents of Kemsing. Please feel free to stop and speak to me in the street at anytime or come along to one of my street surgeries, details of which are published on the Kent Police website at www.kent.police.uk. My next surgery will be outside the Dynes Road shopping parade on Friday, 28th September, 4.30 - 5.30 pm. If you need to contact me, please dial **101** and I will be happy to speak to you if I am on duty. For urgent calls or where life is in danger or property is at risk, then dial **999**.

Should the weather improve during the summer and the sun come out, this is a time when opportunist thieves are looking for open windows. I advise that windows are closed and secured with window locks whenever you leave your home. Ground floor windows are particularly vulnerable, as are windows where they can be accessed via flat rooves. If you choose to sleep with an open window for ventilation, ideally these windows should be fitted with window opening restrictor security devices to deter intruders. If you own a ladder, please ensure that it is locked away in your garage or shed or chain it to the side of a building, so that it cannot be used by thieves.

Sheds and outbuildings can also be vulnerable and easy targets for thieves, sometimes we underestimate the value of items we store in these buildings. I advise that they be fitted with good quality padlocks, ideally to the 'Sold Secure' security standard. Hasps, bolts and exterior hinges should have fitting screws concealed and ideally security clutch screws used. Shed alarms should also be considered. These can be very easy to install yourself, as many are battery operated and they are relatively inexpensive to purchase. Make sure all tools are securely locked away so they cannot be used by thieves and security mark these items with your house number and postcode.

If your property uses heating oil, you may wish to consider installing an oil tank alarm and fit good quality locks to tank filling caps. Cars should also be securely locked and windows closed, even when on your own driveway. Valuables such as satnavs, laptops and handbags should be removed from vehicles and not left on view whenever your vehicle is left unattended. At night, ensure your property is secure and do not leave house and car keys on display or near a window or letterbox. You may wish to take any keys, wallets and handbags to your bedroom with you. Kent Police hope that you all have a safe and enjoyable summer.

PCSO Adrian Fromm

The Village Framer

Quality at an
affordable price

Artwork
Needlework
Pictures & Posters

www.villageframer.co.uk

graham@villageframer.co.uk
07858 126427

SHEFFORDS
Estate Agents & Surveyors
EST. 1987

- Buying Services
- RICS Home Buyers Reports
- Valuations
- Development Consultancy
- Property Subletment Consultants
- Rent Review Advice
- Party Wall Matters

11, London Rd, Sevenoaks, TN11 1AF

Email : enquiries@sheffords.co.uk

www.sheffords.co.uk

01732 450860



Kemsing Motor COMPANY

- MOT Tests (Cars & Diesels)
- Servicing & Repairs to all makes of car
- Full Diagnostics
- Air Conditioning Servicing
- Servicing & Repairs to motor cycles
- Parts & Labour Guarantee
- Free Collection & Delivery within 10 mile radius
- Courtesy Car available by arrangement
- Friendly & Helpful Staff
- Member of RMP Quality Control Programme

7, West End, Kemsing, Sevenoaks, Kent

Tel: 01732 741 873

Fax: 01732 741 114

www.kemsingmotors.co.uk



Master Partner



KEMSING PRIMARY SCHOOL REPORT

The following article was written by Mike Mumford (son of Headteacher Eileen Mumford) who spent 6 weeks during June and July doing work experience in the Kemsing Primary School office.



“You might think that the office in a quiet village school would be a calm and relaxing place to work and you’d probably be right; although what this school certainly isn’t is quiet! In my first week I was regularly confused by the wide array of different telephone sounds being produced in the office; how a room so small needs so many phones is beyond me. When I finally believed I’d worked out the sources of all the sounds, a peculiar machine which incorporated phone and printer (some tell me it’s called a ‘fax’ machine) burst into life in the corner and ruined my surety.

Sometimes the telephone stops ringing just long enough to make a cup of tea and resume the work you were doing and at points it seems real progress is being made; this tends to be short-lived however, as there is always a grazed knee or a bumped head requiring attention or a forgotten swimming kit that has to be found. After the end-of-school rush has died down and you have a moment to reflect on your day you realise that you have managed to dedicate most of your day to tasks that were completely unforeseeable the day before and that that cup of tea you had made has been cold for hours. Aside from the perpetual tiredness of constantly trying to do eight things at once (I’ve suggested introducing octopus replacements for the office staff several times now) the school office is a brilliant place to work; the staff and the parents have been completely welcoming and understanding of the hectic nature of the job and the children always find a way to bring a smile to your face when you least expect it.”

Mike Mumford

DOWN TO EARTH



Professional Tree Management

All aspects of tree care [planting to felling]

Hedge Cutting

Stump Removal

Over 30 years experience

Logs

For help & friendly advice call our office

01959 524 623

The Oast, Preston Farm, Shoreham,
Kent TN14 7UD Tel.

Email : enquiries@downtoearthtrees.co.uk

Website : www.downtoearthtrees.co.uk

SGE (SEAL) LTD [Seal Engineering]

Specialist in:
House Mats, Garage Flooring,
Road Gums, Water Troughs,
Wood Screens, Work Flooring,
Coverings,
Flooring & Pipe Fixings, Cracking,
Gutters, Roofs, Pool Repairs etc.

We also provide a Professional Service for
Electrical Installations and Firefighting
and Gaswork, Heating, Plastering
and all other Building Workings

Delivery & fitting services available

01959 524 623
0800-826262 0800-0700
SAT 0800-1200
SUNDAY CLOSED

The Oast, Preston Farm, Shoreham, Kent TN14 7UD
Tel: 01959 524 623
Email: info@sge.co.uk

THE ST EDITH CLUB

Affiliated to the CIU

Evenings 7 -11 p.m. & Sunday Lunchtime 12 -3.00 p.m.

Sunday Evening 7 -10.30 p.m.

Why not come along and join us.

Membership open to anyone

Over the age of 18.

Full membership £10.

DARTS

QUIZ NIGHTS / LIVE ENTERTAINMENT

Please Phone 01732 762 755 for details or call at the door

CIU Associate card £3.00

There is a £6.00 refundable door fob deposit.

Raffles every Friday night & Sunday Lunchtime.

No joining fee

Over 60 £5.00

BINGO
POOL

CRIB
SOLO

A GHOST IN OTFORD—News from Cotmans Ash

From my gate at Cotmans Ash I gaze over one of the finest wild flower meadows in the Village – 20 acres of wild nature at its best with a variety of flowers, grasses and sedges beyond my count including wild orchids.

After a difficult and wet summer these early autumn days have come up with some bright hot sunshine that breathes new life into the meadow by day – leading to sultry, warm almost oppressive evenings that have brought a great surge of night flying moths, beetles and bugs that hatch in the meadow and take to the wing at great speed to escape from the crows, jays, magpies and even seagulls who turn up for the evening banquet, but they are well out flown and robbed by a pair of ace flying machines – two falcon like birds dipping and diving, rolling and gliding, taking cockchafer beetles with a speed that would outstrip a swallow – a pair of hobbies in an aerobatic spectacular. They take with the feet, transfer to the beak in one movement, then off to feed the two young in a tall ash tree. Hobbies rearing their young here at Cotmans Ash is a first for me. When they leave us in September/October they journey deep down into Africa to over-winter.

We are just beginning to see the effect of the late March frost – my plum crop is a write off, the same goes for the apples and pears – even the nut trees caught it – no walnuts, very few damsons with the wild sloes just as bereft. As some form of compensation it seems there is an abundance of wild fruit with elderberries, rowan, holly, hips and haws, wayfarer and no end of berries in the hedge rows which goes to show Nature has not forgotten her wild children.

I notice that the autumn cyclamen have jumped the captivity of the garden into the woodland at Cotmans Ash and turning up all over the place with their tiny pink nodding blossoms and green/black marbled leaves – they truly are my favourites of late summer flowers. I see that Heather has now got several white ones going. Greville Gidley Kitchen at ‘Wybournes’ has a spring flowering variety (C.Coum).

Like many I don’t doubt, I am so relieved to see Otford Pond restored and healthy again, it is such a landmark in our downland villages. On summer days the twin Babylonian Willows spread their shadow over sleeping ducks and Otford visitors – I fear one of the willows is in trouble with ‘willow rust’ a contagious, usually fatal fungus.

The River Darent drains Otford, but when gorged with flood water, backs up and swills across Bubblestone meadows forming a shallow flood plain that brings in all manner of swimmers and waders, and early on this year among the pee-wits and seagulls I saw a little egret standing like a ghost in the evening sunshine. I can think of no other bird as white as he – a white heron in all but name – they have been seen ‘frogging’ in Guzzle Brook at Noah’s Ark, no one seems to know where he lives or if he has a wife and family – a bird with a secret!

Brian Doe

1ST KEMSING RAINBOWS



1st Kemsing Rainbows enjoyed their mini Olympics parading their torch and joining in with many events including relays, javelin, discus and egg and spoon races.

RED CARPET TREATMENT FOR ST MARY'S



The front of St Mary's Church has been considerably brightened with the removal of the two front pews and their replacement with a carpeted area.

This will give much more room for weddings and funerals as well as giving a performance space for concerts and events, and for children's services. The cost of this work was met by a generous donation.

Success at 11 for boys and girls

At Russell House School in Otford, all 18 children who took the 11-plus exam for secondary school entry in September 2012 passed with an average score of 410. Six children gained full marks.

We ensure children are well prepared for all exams at 11, while enjoying a full curriculum where music, sport and drama are also pursued to high levels of achievement.

Children thrive at Russell House within a happy, friendly and welcoming environment where we establish positive attitudes to learning and life which will benefit them long into the future.

We welcome boys and girls from the age of two and children join at other ages where spaces are available. Call to find out more.



Russell House School

Station Road, Otford, Kent TN84 5QU

Tel 01959 523832 www.russellhouseschool.co.uk



WELHAM JONES

Funeral Directors & Monumental Masons

01732 742400 or 01959 525440 : 01732 780600

105 London Road, Sevenoaks, TN11 1DU

43 Station Road,
Borough Green, TN75 5AH

www.welhamjones.co.uk

An Independent Family Owned Company

24 hour
service

Pre-paid funeral
plans available



FAMILY MILESTONES

Baptisms

Jacob Johnston on June 10th 2012
Robert Benjamin Dilley on June 17th 2012
Amy Ruffin on 8th July 2012
Jazzmin Graves on 8th July 2012

Deaths—Rest in Peace

David Dockree (47) on 31st May 2012
Peter Barnes (67) on 5th June 2102
Monty Parkin (68) on 11th June 2012
Len Newell (92) on 16th June 2012
Barbara Williamson(82) on 3rd July 2012

Weddings

Gary Ford and Charlotte Slate on June 16th 2012
Warren Downey and Kelly Crouch at Woodlands on 7th July
Andrew Payne and Rebecca Suaznabar on 7th July 2012
Christopher Freeman and Denise Carolan on 21st July 2012
Edwin Newman and Gillian King at Woodlands on 28th July

Kemsing Church & Village News—1962 & 1987

Extracts from Kemsing Church & Village News 1962 The Vicar (Rev.G.M. Young) wrote about the recent death of **Rose Chandler of Noah's Ark**. Her loss was widely felt because of "the quality of her life and character". The Parish Council agreed to a plan for **16 Old Peoples Homes** on part of the Common Field. The Church also gave up some land. "The car park will certainly be useful for the Church" was one of the justifications (not borne out subsequently). An extension of the **Churchyard** (Cleves Orchard) was agreed by the Parish Council who will share the maintenance costs of the entire Churchyard with the PCC. The **Womens Institute** held their AGM. Mrs D King took over from Mrs Doris Dew (who had resigned) as President.

Extracts from "The Well" Christmas 1987 (the Autumn edition was not published following the hurricane) A special Parish Meeting was held to view plans of the envisaged 54 units of housing to constitute **Fairfield**. The Bishop of Rochester, **Dr David Say**, announced his retirement. He and his wife will live in East Sussex. The **Gardener's Society** had enjoyed an outing involving a trip on the River Thames. Their annual buffet dinner had had to be cancelled because of the absence of heating and lighting (due to the hurricane). The Historical & Art Society held an inaugural meeting in 1986 but an earlier **Historical Society** existed from 1944-54. It had been founded by Mr Charles Brett and its most famous activity was the excavation and research of Springhead (now under Brookfield and Oxenhill Road). A report of this work was published and is at the Heritage Centre. Kemsing's new **sports pavilion** was formally opened on 1 August by Mr Ronnie Norman. **Frank Johnson**, who devoted his life to the Royal School of Church Music and the training of local choirboys, died suddenly. He was the organist at St. Mary's Church and a fund was set up in his memory. Walter Williamson contributed an article on "**The Old Tyme Music Hall**" that the Kemsing Players had just performed.

DMB LAW

Solicitors

Helping you move forward



Property & Conveyancing
Company & Commercial
Wills, Trusts & Probate
Family & Matrimonial
Dispute Resolution
Employment

For enquiries please contact

01732 228800 E-mail: legal@dmblaw.co.uk

The Old Bat & Ball, St. John's Hill, Sevenoaks Kent
TN13 3PF

Visit our website: www.dmblaw.co.uk

THE KEMSING ST EDITH FESTIVAL 2011



Last year's 6th Kemsing St. Edith Festival was such a success that a small profit was made. It was decided to mark the event with a plaque which would also commemorate the 100th birthday of the St. Edith Hall.

The plaque (shown here on the left) is to be installed in St. Edith Hall and will be a permanent reminder of last year's happy events.

ST. MARY'S CHURCH CHOIR—ANY FAMILIAR FACES?



This photograph of the St. Mary's Church choir was taken over 20 years ago. How many familiar faces can you name?

Answers on a post-card please—but no prizes!

The Well is printed by **HIGHLAND PRINTERS**

Unit 1, Church Farm, Church Street, Seal, Kent TN15 0AT, tel. 01732 762131, fax.01732 763501 Email: highlandprinters@aol.com We are grateful to Highland Printers who are printing *The Well* this year, and for all their help.

Village Diary

September

- 12th W.I. Produce and Craft Show. St. Edith Large Hall details from Heather Porter on 01959 523543
- 15th Kemsing Gardeners Autumn Show Kemsing School hall 2.30. Entry details Les. Green 01959 524376
- 20th Trefoil Guild talk 'The London Scripture Blitz' St Mary's Church Hall 7.45, plus Bring and Buy
- 25th M.U. Thanksgiving service at St. Mary's. This will be the last meeting of the St. Mary's M.U. Details from E. Waters 01732 761431

October

- 5th Heritage Centre talk by G. Ellen 'The History of the Medway Queen Paddle Steamer' St. Edith Hall 7.30 Members free, non members £2.50 phone Erica Cole for tickets 01732 761772 .
- 6th Heritage Centre open 10.00-12.00
- 9th Heritage Centre Quiz St. Edith Hall 7.30 £7.00 details A.Waters 01732 761431
- 9th Kemsing Gardeners talk on 'Alpine Gardens' by C. Kitchener. St. Edith small hall 8.00
- 10th W.I. Talk 'Paintings to remember' with Gerry Harris. Details from Heather Porter on 01959 523543
- 12th Kemsing Wildlife Group. 'Wild animals I have known' with Brian Doe. St. Edith Small Hall 8pm, £2 entrance fee
- 18th Trefoil Guild Shoe Box appeal St. Mary's Church Hall 7.45
- 20th Watercolour Workshop. 9.30am Church Hall. Phone 01732 760115 for details.
- 21st Heritage Centre Autumn Walk 2.00pm village car park adults £2.00 children free.
- 26th Heritage Centre talk by L. Hacker 'Rochester Cathedral' tickets as above
- 27th Concert ***The Best of British*** 'An evening full of pure patriotism 7.30 St. Mary's Church no entry cost but a silent donation plate on retiring

November

- 3rd Heritage Centre open 10.00-12.00
- 9th Kemsing Wildlife Group. 'Mexican Magic' with Peter and Pauline Heathcote. St Edith small hall at 8pm., £2 entrance fee
- 13th Kemsing Gardeners talk by C. Lane on 'Growing Witchazels' St. Edith small hall 8.00
- 14th W.I. Talk 'Ellenor Hospice' St. Edith small hall 7.45 details from Heather Porter on 01959 523543
- 15th Trefoil Guild talk by B. Darby 'Out and about with my camera' St. Mary's Church Hall 7.45
- 30th Heritage Centre Seasonal Social Gathering St. Edith hall 7.30

December

- 7th Kemsing Wildlife Group. 'Christmas Shindig' in St. Edith Hall at 8pm
- 11th M.U. Christmas Party 2.00pm St. Mary's Church Hall details from Elizabeth Waters on 01732 761431
- 12th W.I. Christmas Party St. Edith small hall 7.45.details from Heather Porter on 01959 523543
- 20th Trefoil Guild Celebrating Christmas St. Mary's Church Hall 7.45



Able Decorators

Specialists
in interior &
exterior painting
& wallpapering



Call now for a
FREE ESTIMATE
01732 456700
07946 200453



Member of the
Federation of
Painters and
Decorators

or email abledecorators.com